

Product Name: Laminin α -1 Rabbit Polyclonal Antibody
Catalog #: APRab13196



Summary

Production Name	Laminin α -1 Rabbit Polyclonal Antibody
Description	Rabbit Polyclonal Antibody
Host	Rabbit
Application	WB,IF,ELISA
Reactivity	Human,Rat,Mouse

Performance

Conjugation	Unconjugated
Modification	Unmodified
Isotype	IgG
Clonality	Polyclonal
Form	Liquid
Storage	Store at 4°C short term. Aliquot and store at -20°C long term. Avoid freeze/thaw cycles.
Buffer	Liquid in PBS containing 50% glycerol, 0.5% BSA and 0.02% New type preservative N.
Purification	Affinity purification

Immunogen

Gene Name	LAMA1
Alternative Names	LAMA1; LAMA; Laminin subunit alpha-1; Laminin A chain; Laminin-1 subunit alpha; Laminin-3 subunit alpha; S-laminin subunit alpha; S-LAM alpha
Gene ID	284217.0
SwissProt ID	P25391.The antiserum was produced against synthesized peptide derived from human LAMA1. AA range:2501-2550

Application

Dilution Ratio	WB 1:500 - 1:2000. IF 1:200 - 1:1000. ELISA: 1:20000. Not yet tested in other applications.
Molecular Weight	

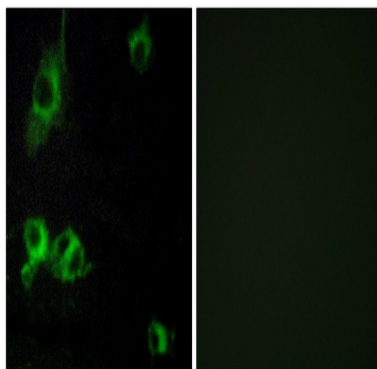
Background

This gene encodes one of the alpha 1 subunits of laminin. The laminins are a family of extracellular matrix glycoproteins that have a heterotrimeric structure consisting of an alpha, beta and gamma chain. These proteins make up a major component of the basement membrane and have been implicated in a wide variety of biological processes including cell adhesion, differentiation, migration, signaling, neurite outgrowth and metastasis. Mutations in this gene may be associated with Poretti-Boltshauser syndrome. [provided by RefSeq, Sep 2014],domain:Domains VI, IV and G are globular.,domain:The alpha-helical domains I and II are thought to interact with other laminin chains to form a coiled coil structure.,function:Binding to cells via a high affinity receptor, laminin is thought to mediate the attachment, migration and organization of cells into tissues during embryonic development by interacting with other extracellular matrix components.,similarity:Contains 1 laminin N-terminal domain.,similarity:Contains 17 laminin EGF-like domains.,similarity:Contains 2 laminin IV type A domains.,similarity:Contains 5 laminin G-like domains.,subcellular location:Major component.,subunit:Laminin is a complex glycoprotein, consisting of three different polypeptide chains (alpha, beta, gamma), which are bound to each other by disulfide bonds into a cross-shaped molecule comprising one long and three short arms with globules at each end. Alpha-1 is a subunit of laminin-1 (EHS laminin) and laminin-3 (S-laminin),

Research Area

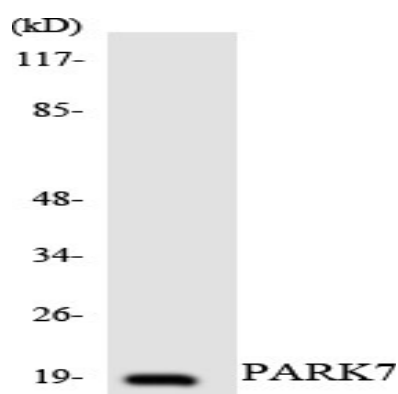
Focal adhesion;ECM-receptor interaction;Pathways in cancer;Small cell lung cancer;

Image Data



Immunofluorescence analysis of COS7 cells, using LAMA1 Antibody. The picture on the right is blocked with the synthesized peptide.

Product Name: Laminin α -1 Rabbit Polyclonal Antibody
Catalog #: APRab13196



Western blot analysis of the lysates from HUVECcells using PARK7 antibody.

Note

For research use only.