

Product Name: KPI-2 Rabbit Polyclonal Antibody
Catalog #: APRab13098



Summary

Production Name	KPI-2 Rabbit Polyclonal Antibody
Description	Rabbit Polyclonal Antibody
Host	Rabbit
Application	IF,IHC,WB,ELISA
Reactivity	Human,Rat,Mouse

Performance

Conjugation	Unconjugated
Modification	Unmodified
Isotype	IgG
Clonality	Polyclonal
Form	Liquid
Storage	Store at 4°C short term. Aliquot and store at -20°C long term. Avoid freeze/thaw cycles.
Buffer	Liquid in PBS containing 50% glycerol, 0.5% BSA and 0.02% New type preservative N.
Purification	Affinity purification

Immunogen

Gene Name	LMTK2
Alternative Names	LMTK2; AATYK2; BREK; KIAA1079; KPI2; LMR2; Serine/threonine-protein kinase LMTK2; Apoptosis-associated tyrosine kinase 2; Brain-enriched kinase; hBREK; CDK5/p35-regulated kinase; CPRK; Kinase/phosphatase/inhibitor 2; Lemur tyrosine kinase 2
Gene ID	22853.0
SwissProt ID	Q8IWU2.The antiserum was produced against synthesized peptide derived from human LMTK2. AA range:651-700

Application

Dilution Ratio	WB 1:500 - 1:2000. IHC 1:100 - 1:300. IF 1:200 - 1:1000. ELISA: 1:20000. Not yet tested in other applications.
-----------------------	--

Product Name: KPI-2 Rabbit Polyclonal Antibody
Catalog #: APRab13098



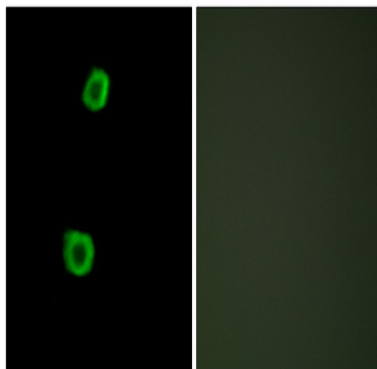
Molecular Weight 164kD

Background

The protein encoded by this gene belongs to the protein kinase superfamily and the protein tyrosine kinase family. It contains N-terminal transmembrane helices and a long C-terminal cytoplasmic tail with serine/threonine/tyrosine kinase activity. This protein interacts with several other proteins, such as Inhibitor-2 (Inh2), protein phosphatase-1 (PP1C), p35, and myosin VI. It phosphorylates other proteins, and is itself also phosphorylated when interacting with cyclin-dependent kinase 5 (cdk5)/p35 complex. This protein involves in nerve growth factor (NGF)-TrkA signalling, and also plays a critical role in endosomal membrane trafficking. Mouse studies suggested an essential role of this protein in spermatogenesis. [provided by RefSeq, Oct 2009],catalytic activity:ATP + a protein = ADP + a phosphoprotein.,function:Phosphorylates PPP1C, phosphorylase b and CFTR.,online information:LMTK2 entry,PTM:Autophosphorylated. Phosphorylated.,similarity:Belongs to the protein kinase superfamily. Tyr protein kinase family.,similarity:Contains 1 protein kinase domain.,subunit:Interacts with PPP1C and inhibitor-2.,tissue specificity:Mainly expressed in skeletal muscle, and weakly in brain and pancreas.,

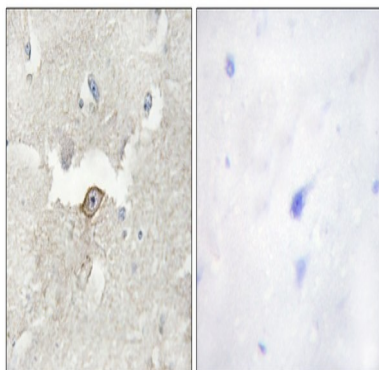
Research Area

Image Data

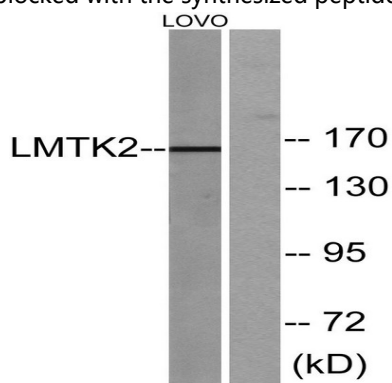


Immunofluorescence analysis of HepG2 cells, using LMTK2 Antibody. The picture on the right is blocked with the synthesized peptide.

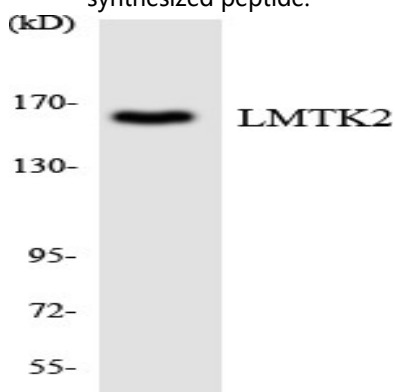
Product Name: KPI-2 Rabbit Polyclonal Antibody
Catalog #: APRab13098



Immunohistochemistry analysis of paraffin-embedded human brain tissue, using LMTK2 Antibody. The picture on the right is blocked with the synthesized peptide.

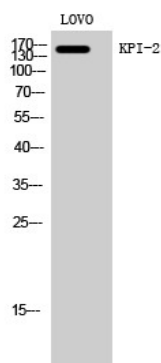


Western blot analysis of lysates from LOVO cells, using LMTK2 Antibody. The lane on the right is blocked with the synthesized peptide.



Western blot analysis of the lysates from COLO205 cells using LMTK2 antibody.

Product Name: KPI-2 Rabbit Polyclonal Antibody
Catalog #: APRab13098



Western Blot analysis of LOVO cells using KPI-2 Polyclonal Antibody

Note

For research use only.