

Product Name: KLF8 Rabbit Polyclonal Antibody
Catalog #: APRab13064



Summary

Production Name	KLF8 Rabbit Polyclonal Antibody
Description	Rabbit Polyclonal Antibody
Host	Rabbit
Application	IHC,ELISA
Reactivity	Human,Rat,Mouse

Performance

Conjugation	Unconjugated
Modification	Unmodified
Isotype	IgG
Clonality	Polyclonal
Form	Liquid
Storage	Store at 4°C short term. Aliquot and store at -20°C long term. Avoid freeze/thaw cycles.
Buffer	Liquid in PBS containing 50% glycerol, 0.5% BSA and 0.02% New type preservative N.
Purification	Affinity purification

Immunogen

Gene Name	KLF8
Alternative Names	KLF8; BKLF3; ZNF741; Krueppel-like factor 8; Basic krueppel-like factor 3; Zinc finger protein 741
Gene ID	11279.0
SwissProt ID	O95600.The antiserum was produced against synthesized peptide derived from human KLF8. AA range:191-240

Application

Dilution Ratio	IHC 1:100-1:300 ELISA: 1:10000
Molecular Weight	

Background

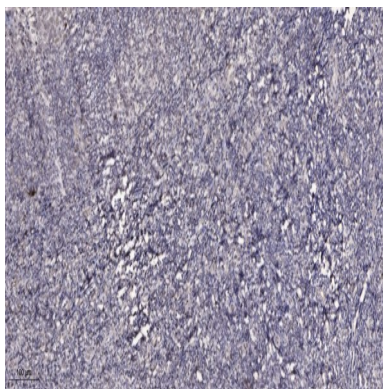
Product Name: KLF8 Rabbit Polyclonal Antibody
Catalog #: AP Rab13064



This gene encodes a protein which is a member of the Sp/KLF family of transcription factors. Members of this family contain a C-terminal DNA-binding domain with three Kruppel-like zinc fingers. The encoded protein is thought to play an important role in the regulation of epithelial to mesenchymal transition, a process which occurs normally during development but also during metastasis. A pseudogene has been identified on chromosome 16. Alternative splicing results in multiple transcript variants. [provided by RefSeq, Apr 2009],function:Transcriptional repressor and activator. Binds to CACCC-boxes promoter elements. Also binds the GT-box of cyclin D1 promoter and mediates cell cycle progression at G(1) phase as a downstream target of focal adhesion kinase (FAK).,PTM:Sumoylation at Lys-67 represses transcriptional activity and reduces cell cycle progression into the G(1) phase. Has no effect on subcellular location.,similarity:Belongs to the Sp1 C2H2-type zinc-finger protein family.,similarity:Contains 3 C2H2-type zinc fingers,subunit:Interacts with corepressor CtBP2. Interacts with PIAS1, PIAS2, AND PIAS4; the interaction with each ligase sumoylates KLF8.,tissue specificity:Ubiquitous.,

Research Area

Image Data



Immunohistochemical analysis of paraffin-embedded human tonsil. 1, Antibody was diluted at 1:200 (4° overnight) . 2, Tris-EDTA,pH9.0 was used for antigen retrieval. 3,Secondary antibody was diluted at 1:200 (room temperature, 45min) .

Note

For research use only.