

Product Name: KKLC1 Rabbit Polyclonal Antibody
Catalog #: APRab13045



Summary

Production Name	KKLC1 Rabbit Polyclonal Antibody
Description	Rabbit Polyclonal Antibody
Host	Rabbit
Application	WB
Reactivity	Human,Rat,Mouse

Performance

Conjugation	Unconjugated
Modification	Unmodified
Isotype	IgG
Clonality	Polyclonal
Form	Liquid
Storage	Store at 4°C short term. Aliquot and store at -20°C long term. Avoid freeze/thaw cycles.
Buffer	Liquid in PBS containing 50% glycerol, and 0.02% New type preservative N.
Purification	Affinity purification

Immunogen

Gene Name	KKLC1 CXorf61
Alternative Names	
Gene ID	203413.0
SwissProt ID	Q5H943.Synthesized peptide derived from human protein . at AA range: 30-110

Application

Dilution Ratio	WB 1:500-2000 ELISA 1:5000-20000
Molecular Weight	12kD

Background

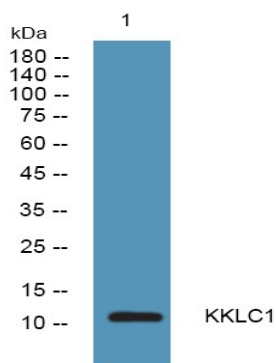
tissue specificity:Specifically expressed in testis. Expressed by cancer cell lines.,tissue specificity:Specifically expressed in testis. Expressed by cancer cell lines.,

Product Name: KKLC1 Rabbit Polyclonal Antibody
Catalog #: APRab13045



Research Area

Image Data



Western blot analysis of lysates from K562 cells, primary antibody was diluted at 1:1000, 4° over night

Note

For research use only.