

Product Name: KKIALRE Rabbit Polyclonal Antibody
Catalog #: APRab13043



Summary

Production Name	KKIALRE Rabbit Polyclonal Antibody
Description	Rabbit Polyclonal Antibody
Host	Rabbit
Application	WB,IHC
Reactivity	Human,Rat

Performance

Conjugation	Unconjugated
Modification	Unmodified
Isotype	IgG
Clonality	Polyclonal
Form	Liquid
Storage	Store at 4°C short term. Aliquot and store at -20°C long term. Avoid freeze/thaw cycles.
Buffer	Liquid in PBS containing 50% glycerol, 0.5% BSA and 0.02% New type preservative N.
Purification	Affinity purification

Immunogen

Gene Name	CDKL1
Alternative Names	CDKL1; Cyclin-dependent kinase-like 1; Protein kinase p42 KKIALRE; Serine/threonine-protein kinase KKIALRE
Gene ID	8814.0
SwissProt ID	Q00532.The antiserum was produced against synthesized peptide derived from human CDKL1. AA range:281-330

Application

Dilution Ratio	WB 1:500 - 1:2000. IHC 1:100 - 1:300. ELISA: 1:10000..
Molecular Weight	42kD

Product Name: KKIALRE Rabbit Polyclonal Antibody
Catalog #: APRab13043

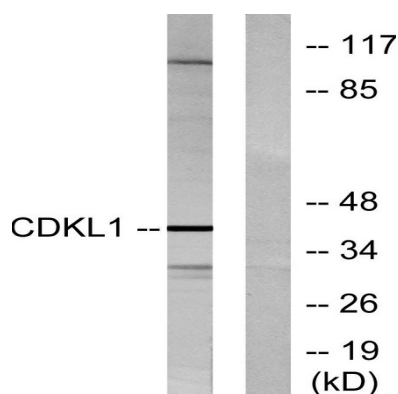


Background

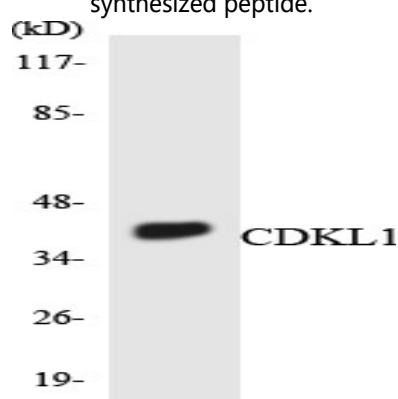
This gene product is a member of a large family of CDC2-related serine/threonine protein kinases. It accumulates primarily in the nucleus. Two transcript variants encoding different isoforms have been found for this gene. [provided by RefSeq, Aug 2013], catalytic activity: ATP + a protein = ADP + a phosphoprotein., domain: The [NKR]KIAxRE motif seems to be a cyclin-binding region., similarity: Belongs to the protein kinase superfamily., similarity: Belongs to the protein kinase superfamily. CMGC Ser/Thr protein kinase family. CDC2/CDKX subfamily., similarity: Contains 1 protein kinase domain., tissue specificity: Highly expressed in kidney, and to a lower extent in ovary.,

Research Area

Image Data

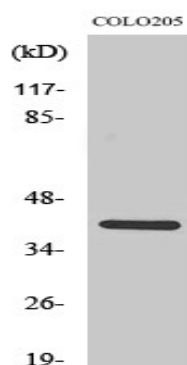


Western blot analysis of lysates from COLO205 cells, using CDKL1 Antibody. The lane on the right is blocked with the synthesized peptide.

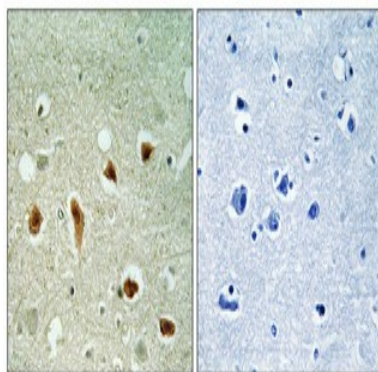


Western blot analysis of the lysates from COLO205 cells using CDKL1 antibody.

Product Name: KKIALRE Rabbit Polyclonal Antibody
Catalog #: APRab13043



Western Blot analysis of various cells using KKIALRE Polyclonal Antibody diluted at 1 : 500



Immunohistochemical analysis of paraffin-embedded Human brain. Antibody was diluted at 1:100 (4°, overnight) . High-pressure and temperature Tris-EDTA, pH 8.0 was used for antigen retrieval. Negative control (right) obtained from antibody was pre-absorbed by immunogen peptide.

Note

For research use only.