

Product Name: KIF4A Rabbit Polyclonal Antibody
Catalog #: APRab13015



Summary

Production Name	KIF4A Rabbit Polyclonal Antibody
Description	Rabbit Polyclonal Antibody
Host	Rabbit
Application	WB,ELISA
Reactivity	Human,Rat,Mouse

Performance

Conjugation	Unconjugated
Modification	Unmodified
Isotype	IgG
Clonality	Polyclonal
Form	Liquid
Storage	Store at 4°C short term. Aliquot and store at -20°C long term. Avoid freeze/thaw cycles.
Buffer	Liquid in PBS containing 50% glycerol, 0.5% BSA and 0.02% New type preservative N.
Purification	Affinity purification

Immunogen

Gene Name	KIF4A
Alternative Names	KIF4A; KIF4; Chromosome-associated kinesin KIF4A; Chromokinesin-A
Gene ID	24137.0
SwissProt ID	O95239.The antiserum was produced against synthesized peptide derived from human KIF4A. AA range:1171-1220

Application

Dilution Ratio	WB 1:500-2000 ELISA 2000-20000
Molecular Weight	140kD

Background

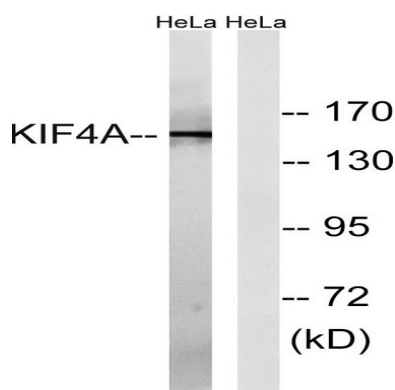
Product Name: KIF4A Rabbit Polyclonal Antibody
Catalog #: APRab13015



kinesin family member 4A(KIF4A) Homo sapiens This gene encodes a member of the kinesin 4 subfamily of kinesin related proteins. The encoded protein is an ATP dependent microtubule-based motor protein that is involved in the intracellular transport of membranous organelles. This protein also associates with condensed chromosome arms and may be involved in maintaining chromosome integrity during mitosis. This protein may also be involved in the organization of the central spindle prior to cytokinesis. A pseudogene of this gene is found on chromosome X.[provided by RefSeq, Mar 2010],function:Motor protein that translocates PRC1 to the plus ends of interdigitating spindle microtubules during the metaphase to anaphase transition, an essential step for the formation of an organized central spindle midzone and midbody and for successful cytokinesis. May play a role in mitotic chromosomal positioning and bipolar spindle stabilization.,sequence caution:Contaminating sequence. Potential poly-A sequence.,similarity:Belongs to the kinesin-like protein family.,similarity:Belongs to the kinesin-like protein family. Chromokinesin subfamily.,similarity:Contains 1 kinesin-motor domain.,subcellular location:Not present in the nucleolus. In early mitosis, associated with the mitotic spindle, in anaphase, localized to the spindle midzone and, in telophase and cytokinesis, to the midbody. In late cytokinesis, found in the center of the midbody. Associated with chromosomes at all stages of mitosis.,subunit:Interacts with unphosphorylated PRC1 during late mitosis.,tissue specificity:Highly expressed in hematopoietic tissues, fetal liver, spleen, thymus and adult thymus and bone marrow. Lower levels are found in heart, testis, kidney, colon and lung.,tissue specificity:Specifically expressed in testis.,

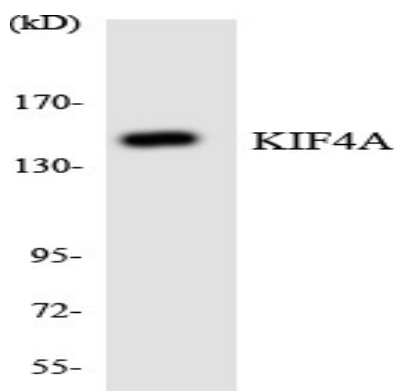
Research Area

Image Data



Western blot analysis of lysates from HeLa cells, using KIF4A Antibody. The lane on the right is blocked with the synthesized peptide.

Product Name: KIF4A Rabbit Polyclonal Antibody
Catalog #: APRab13015



Western blot analysis of the lysates from HeLa cells using KIF4A antibody.



Western Blot analysis of various cells using KIF4A Polyclonal Antibody diluted at 1: 500

Note

For research use only.