

Product Name: KIF13B Rabbit Polyclonal Antibody
Catalog #: APRab13007



Summary

| | |
|------------------------|-----------------------------------|
| Production Name | KIF13B Rabbit Polyclonal Antibody |
| Description | Rabbit Polyclonal Antibody |
| Host | Rabbit |
| Application | IHC,ELISA |
| Reactivity | Human,Rat,Mouse |

Performance

| | |
|---------------------|------------------------------------------------------------------------------------------|
| Conjugation | Unconjugated |
| Modification | Unmodified |
| Isotype | IgG |
| Clonality | Polyclonal |
| Form | Liquid |
| Storage | Store at 4°C short term. Aliquot and store at -20°C long term. Avoid freeze/thaw cycles. |
| Buffer | Liquid in PBS containing 50% glycerol, 0.5% BSA and 0.02% New type preservative N. |
| Purification | Affinity purification |

Immunogen

| | |
|--------------------------|-----------------------------------------------------------------------------------------------------------|
| Gene Name | KIF13B |
| Alternative Names | KIF13B; GAKIN; KIAA0639; Kinesin-like protein KIF13B; Kinesin-like protein GAKIN |
| Gene ID | 23303.0 |
| SwissProt ID | Q9NQT8.The antiserum was produced against synthesized peptide derived from human KIF13B. AA range:111-160 |

Application

| | |
|-------------------------|-------------------------------|
| Dilution Ratio | IHC 1:100-1:300 ELISA: 1:5000 |
| Molecular Weight | 202kD |

Background

function:May be involved in reorganization of the cortical cytoskeleton. May be functionally important for the intracellular

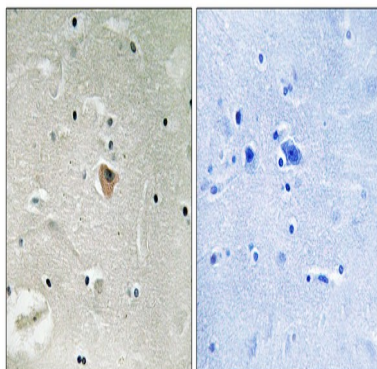
Product Name: KIF13B Rabbit Polyclonal Antibody
Catalog #: AP Rab13007



trafficking of MAGUKs and associated protein complexes.,PTM:Phosphorylated upon DNA damage, probably by ATM or ATR.,similarity:Belongs to the kinesin-like protein family.,similarity:Contains 1 CAP-Gly domain.,similarity:Contains 1 FHA domain.,similarity:Contains 1 kinesin-motor domain.,subunit:Binds to DLG1 and DLG4.,tissue specificity:Ubiquitous.,function:May be involved in reorganization of the cortical cytoskeleton. May be functionally important for the intracellular trafficking of MAGUKs and associated protein complexes.,PTM:Phosphorylated upon DNA damage, probably by ATM or ATR.,similarity:Belongs to the kinesin-like protein family.,similarity:Contains 1 CAP-Gly domain.,similarity:Contains 1 FHA domain.,similarity:Contains 1 kinesin-motor domain.,subunit:Binds to DLG1 and DLG4.,tissue specificity:Ubiquitous.,

Research Area

Image Data



Immunohistochemistry analysis of paraffin-embedded human brain, using KIF13B Antibody. The picture on the right is blocked with the synthesized peptide.

Note

For research use only.