

Product Name: KCNH3 Rabbit Polyclonal Antibody
Catalog #: APRab12939



Summary

Production Name	KCNH3 Rabbit Polyclonal Antibody
Description	Rabbit Polyclonal Antibody
Host	Rabbit
Application	WB,ELISA
Reactivity	Human,Mouse,Rat

Performance

Conjugation	Unconjugated
Modification	Unmodified
Isotype	IgG
Clonality	Polyclonal
Form	Liquid
Storage	Store at 4°C short term. Aliquot and store at -20°C long term. Avoid freeze/thaw cycles.
Buffer	Liquid in PBS containing 50% glycerol, 0.5% BSA and 0.02% New type preservative N.
Purification	Affinity purification

Immunogen

Gene Name	KCNH3
Alternative Names	KCNH3; KIAA1282; Potassium voltage-gated channel subfamily H member 3; Brain-specific eag-like channel 1; BEC1; Ether-a-go-go-like potassium channel 2; ELK channel 2; ELK2; Voltage-gated potassium channel subunit Kv12.2
Gene ID	23416.0
SwissProt ID	Q9ULD8.Synthesized peptide derived from KCNH3 . at AA range: 470-550

Application

Dilution Ratio	IHC 1:50-300
Molecular Weight	120kD

Background

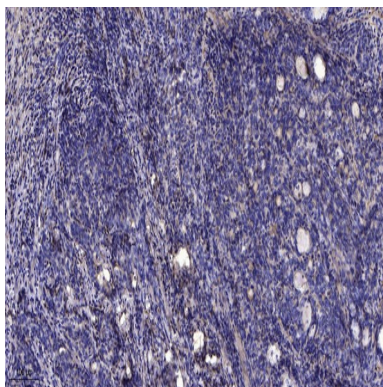
Product Name: KCNH3 Rabbit Polyclonal Antibody
Catalog #: APRab12939



The protein encoded by this gene is a voltage-gated potassium channel alpha subunit predominantly expressed in the forebrain. Studies in mice have found that cognitive function increases when this gene is knocked out. In humans, the encoded protein has been shown to be capable of binding glycoprotein 120 of the human immunodeficiency virus type 1 (HIV-1) envelope. Two transcript variants encoding different isoforms have been found for this gene. [provided by RefSeq, Sep 2015],domain:The segment S4 is probably the voltage-sensor and is characterized by a series of positively charged amino acids at every third position.,function:Pore-forming (alpha) subunit of voltage-gated potassium channel. Elicits an outward current with fast inactivation. Channel properties may be modulated by cAMP and subunit assembly.,similarity:Belongs to the potassium channel family. H (Eag) subfamily.,similarity:Contains 1 cyclic nucleotide-binding domain.,similarity:Contains 1 PAC (PAS-associated C-terminal) domain.,similarity:Contains 1 PAS (PER-ARNT-SIM) domain.,subunit:The potassium channel is probably composed of a homo- or heterotetrameric complex of pore-forming alpha subunits that can associate with modulating beta subunits.,tissue specificity:Detected only in brain, in particular in the telencephalon. Detected in the cerebral cortex, occipital pole, frontal and temporal lobe, putamen, amygdala, hippocampus and caudate nucleus.,

Research Area

Image Data



Immunohistochemical analysis of paraffin-embedded human Gastric adenocarcinoma. 1, Antibody was diluted at 1:200 (4° overnight) . 2, Tris-EDTA,pH9.0 was used for antigen retrieval. 3,Secondary antibody was diluted at 1:200 (room temperature, 45min) .

Note

For research use only.