

## Summary

<b>Production Name</b>	JIK Rabbit Polyclonal Antibody
<b>Description</b>	Rabbit Polyclonal Antibody
<b>Host</b>	Rabbit
<b>Application</b>	WB,ELISA
<b>Reactivity</b>	Human,Mouse,Rat

## Performance

<b>Conjugation</b>	Unconjugated
<b>Modification</b>	Unmodified
<b>Isotype</b>	IgG
<b>Clonality</b>	Polyclonal
<b>Form</b>	Liquid
<b>Storage</b>	Store at 4°C short term. Aliquot and store at -20°C long term. Avoid freeze/thaw cycles.
<b>Buffer</b>	Liquid in PBS containing 50% glycerol, 0.5% BSA and 0.02% New type preservative N.
<b>Purification</b>	Affinity purification

## Immunogen

<b>Gene Name</b>	TAOK3 TAOK3; DPK; JIK; KDS; MAP3K18; Serine/threonine-protein kinase TAO3; Cutaneous T-cell lymphoma-associated antigen HD-CL-09; CTCL-associated antigen HD-CL-09; Dendritic cell-derived protein kinase; JNK/SAPK-inhibitory kinase; Jun kinase-inhi
<b>Alternative Names</b>	
<b>Gene ID</b>	51347.0
<b>SwissProt ID</b>	Q9H2K8.The antiserum was produced against synthesized peptide derived from human TAOK3. AA range:531-580

## Application

<b>Dilution Ratio</b>	WB 1:500-2000 ELISA 2000-20000
<b>Molecular Weight</b>	110kD

**Product Name: JIK Rabbit Polyclonal Antibody**  
**Catalog #: APRab12834**



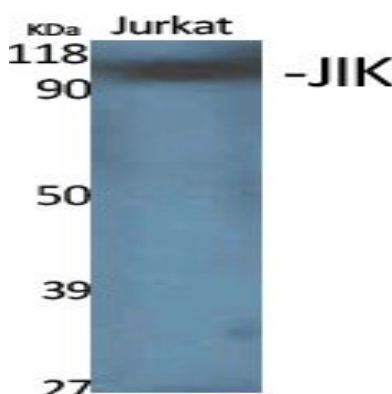
## Background

catalytic activity:ATP + a protein = ADP + a phosphoprotein.,function:Inhibits the basal activity of Jun kinase. Negatively regulated by epidermal growth factor (EGF). When overexpressed, may activate ERK1/ERK2 and JNK/SAPK.,PTM:Autophosphorylated. Phosphorylated upon DNA damage, probably by ATM or ATR.,similarity:Belongs to the protein kinase superfamily. STE Ser/Thr protein kinase family. STE20 subfamily.,similarity:Contains 1 protein kinase domain.,subcellular location:Also localized to the peripheral cell membrane.,subunit:Self-associates.,tissue specificity:Ubiquitously expressed at a low level, and highly expressed in peripheral blood leukocytes (PBLs), thymus, spleen, kidney, skeletal muscle, heart and liver.,catalytic activity:ATP + a protein = ADP + a phosphoprotein.,function:Inhibits the basal activity of Jun kinase. Negatively regulated by epidermal growth factor (EGF). When overexpressed, may activate ERK1/ERK2 and JNK/SAPK.,PTM:Autophosphorylated. Phosphorylated upon DNA damage, probably by ATM or ATR.,similarity:Belongs to the protein kinase superfamily. STE Ser/Thr protein kinase family. STE20 subfamily.,similarity:Contains 1 protein kinase domain.,subcellular location:Also localized to the peripheral cell membrane.,subunit:Self-associates.,tissue specificity:Ubiquitously expressed at a low level, and highly expressed in peripheral blood leukocytes (PBLs), thymus, spleen, kidney, skeletal muscle, heart and liver.,

## Research Area

MAPK\_ERK\_Growth;MAPK\_G\_Protein;

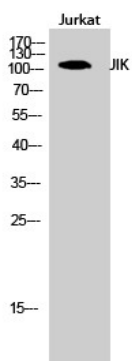
## Image Data



Western Blot analysis of various cells using JIK Polyclonal Antibody

**Product Name: JIK Rabbit Polyclonal Antibody**  
**Catalog #: APRab12834**

---



Western Blot analysis of Jurkat cells using JIK Polyclonal Antibody

**Note**

For research use only.