

Product Name: JAM-B Rabbit Polyclonal Antibody
Catalog #: APRab12827



Summary

| | |
|------------------------|----------------------------------|
| Production Name | JAM-B Rabbit Polyclonal Antibody |
| Description | Rabbit Polyclonal Antibody |
| Host | Rabbit |
| Application | IHC, WB, ELISA |
| Reactivity | Human, Mouse, Rat |

Performance

| | |
|---------------------|--|
| Conjugation | Unconjugated |
| Modification | Unmodified |
| Isotype | IgG |
| Clonality | Polyclonal |
| Form | Liquid |
| Storage | Store at 4°C short term. Aliquot and store at -20°C long term. Avoid freeze/thaw cycles. |
| Buffer | Liquid in PBS containing 50% glycerol, 0.5% BSA and 0.02% New type preservative N. |
| Purification | Affinity purification |

Immunogen

| | |
|--------------------------|---|
| Gene Name | JAM2 |
| Alternative Names | JAM2; C21orf43; VEJAM; Junctional adhesion molecule B; JAM-B; Junctional adhesion molecule 2; JAM-2; Vascular endothelial junction-associated molecule; VE-JAM; CD322 |
| Gene ID | 58494.0 |
| SwissProt ID | P57087. Synthesized peptide derived from the Internal region of human JAM-B. |

Application

| | |
|-------------------------|--|
| Dilution Ratio | WB 1:500 - 1:2000. IHC-p: 1:100-300 ELISA: 1:20000.. |
| Molecular Weight | 33kD |

Background

Product Name: JAM-B Rabbit Polyclonal Antibody
Catalog #: APRab12827

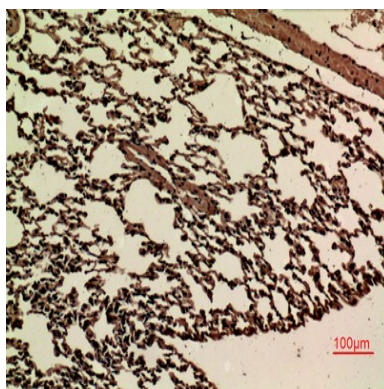


This gene belongs to the immunoglobulin superfamily, and the junctional adhesion molecule (JAM) family. The protein encoded by this gene is a type I membrane protein that is localized at the tight junctions of both epithelial and endothelial cells. It acts as an adhesive ligand for interacting with a variety of immune cell types, and may play a role in lymphocyte homing to secondary lymphoid organs. Alternatively spliced transcript variants have been found for this gene. [provided by RefSeq, Jul 2012],function:May play a role in the processes of lymphocyte homing to secondary lymphoid organs.,similarity:Belongs to the immunoglobulin superfamily.,similarity:Contains 1 Ig-like C2-type (immunoglobulin-like) domain.,similarity:Contains 1 Ig-like V-type (immunoglobulin-like) domain.,subcellular location:Localized at tight junctions of both epithelial and endothelial cells.,subunit:Interacts with JAM3.,tissue specificity:Highest expression in the heart, placenta, lung, foreskin and lymph node. Prominently expressed on high endothelial venules, also present on the endothelia of other vessels. Localized to the intercellular boundaries of high endothelial cells.,

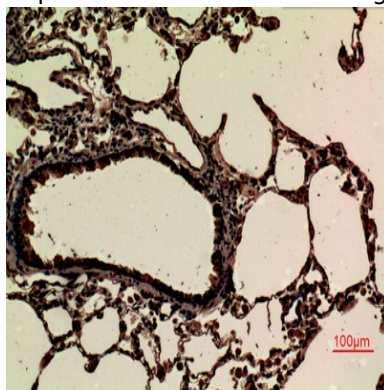
Research Area

Cell adhesion molecules (CAMs);Tight junction;Leukocyte transendothelial migration;Epithelial cell signaling in Helicobacter pylori infection;

Image Data

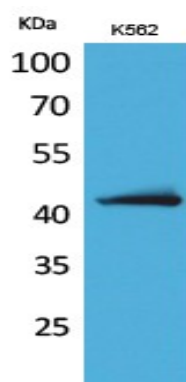


Immunohistochemical analysis of paraffin-embedded mouse-lung, antibody was diluted at 1:100



Immunohistochemical analysis of paraffin-embedded rat-lung, antibody was diluted at 1:100

Product Name: JAM-B Rabbit Polyclonal Antibody
Catalog #: APRab12827



Western Blot analysis of K562 cells using JAM-B Polyclonal Antibody. Secondary antibody was diluted at 1:20000

Note

For research use only.