

**Product Name: INTS2 Rabbit Polyclonal Antibody**  
**Catalog #: APRab12689**



## Summary

<b>Production Name</b>	INTS2 Rabbit Polyclonal Antibody
<b>Description</b>	Rabbit Polyclonal Antibody
<b>Host</b>	Rabbit
<b>Application</b>	WB
<b>Reactivity</b>	Human,Mouse,Rat

## Performance

<b>Conjugation</b>	Unconjugated
<b>Modification</b>	Unmodified
<b>Isotype</b>	IgG
<b>Clonality</b>	Polyclonal
<b>Form</b>	Liquid
<b>Storage</b>	Store at 4°C short term. Aliquot and store at -20°C long term. Avoid freeze/thaw cycles.
<b>Buffer</b>	Liquid in PBS containing 50% glycerol, 0.5% BSA and 0.02% New type preservative N.
<b>Purification</b>	Affinity purification

## Immunogen

<b>Gene Name</b>	INTS2
<b>Alternative Names</b>	INTS2; KIAA1287; Integrator complex subunit 2; Int2
<b>Gene ID</b>	57508.0
<b>SwissProt ID</b>	Q9H0H0.The antiserum was produced against synthesized peptide derived from human INTS2. AA range:201-250

## Application

<b>Dilution Ratio</b>	WB 1:500-2000
<b>Molecular Weight</b>	140kD

## Background

INTS2 is a subunit of the Integrator complex, which associates with the C-terminal domain of RNA polymerase II large

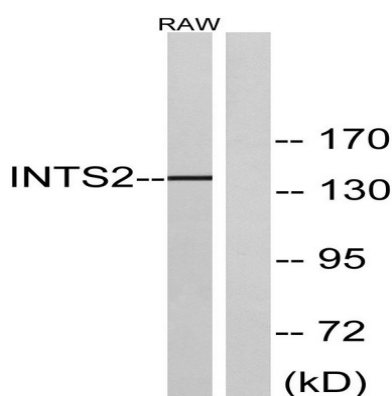
**Product Name: INTS2 Rabbit Polyclonal Antibody**  
**Catalog #: AP Rab12689**



subunit (POLR2A; MIM 180660) and mediates 3-prime end processing of small nuclear RNAs U1 (RNU1; MIM 180680) and U2 (RNU2; MIM 180690) (Baillat et al., 2005 [PubMed 16239144]).[supplied by OMIM, Mar 2008],caution:It is uncertain whether Met-1 or Met-9 is the initiator. Orthologous sequences (mouse and chicken) have shorter N-terminus.,function:Component of the Integrator complex, a complex involved in the small nuclear RNAs (snRNA) U1 and U2 transcription and in their 3'-box-dependent processing. The Integrator complex is associated with the C-terminal domain (CTD) of RNA polymerase II largest subunit (POLR2A) and is recruited to the U1 and U2 snRNAs genes.,PTM:Phosphorylated upon DNA damage, probably by ATM or ATR.,similarity:Belongs to the Integrator subunit 2 family.,subunit:Belongs to the multiprotein complex Integrator, at least composed of INTS1, INTS2, INTS3, INTS4, INTS5, INTS6, INTS7, INTS8, INTS9/RC74, INTS10, CPSF3L/INTS11 and INTS12.,

## Research Area

## Image Data



Western blot analysis of lysates from RAW264.7 cells, using INTS2 Antibody. The lane on the right is blocked with the synthesized peptide.

## Note

For research use only.