

**Product Name: Integrin  $\alpha$ E Rabbit Polyclonal Antibody**  
**Catalog #: APRab12672**



---

## Summary

<b>Production Name</b>	Integrin $\alpha$ E Rabbit Polyclonal Antibody
<b>Description</b>	Rabbit Polyclonal Antibody
<b>Host</b>	Rabbit
<b>Application</b>	IHC,ELISA
<b>Reactivity</b>	Human,Rat,Mouse

## Performance

<b>Conjugation</b>	Unconjugated
<b>Modification</b>	Unmodified
<b>Isotype</b>	IgG
<b>Clonality</b>	Polyclonal
<b>Form</b>	Liquid
<b>Storage</b>	Store at 4°C short term. Aliquot and store at -20°C long term. Avoid freeze/thaw cycles.
<b>Buffer</b>	Liquid in PBS containing 50% glycerol, 0.5% BSA and 0.02% New type preservative N.
<b>Purification</b>	Affinity purification

## Immunogen

<b>Gene Name</b>	ITGAE
<b>Alternative Names</b>	Integrin alpha-E (HML-1 antigen;Integrin alpha-IEL;Mucosal lymphocyte 1 antigen;CD antigen CD103) [Cleaved into: Integrin alpha-E light chain; Integrin alpha-E heavy chain]
<b>Gene ID</b>	3682.0
<b>SwissProt ID</b>	P38570.Synthetic peptide from human protein at AA range: 710-770

## Application

<b>Dilution Ratio</b>	IHC-p 1:50-200, ELISA 1:10000-20000.
<b>Molecular Weight</b>	

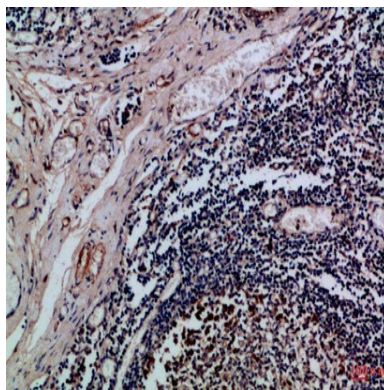
## Background

integrin subunit alpha E(ITGAE) Homo sapiens Integrins are heterodimeric integral membrane proteins composed of an alpha chain and a beta chain. This gene encodes an I-domain-containing alpha integrin that undergoes post-translational cleavage in the extracellular domain, yielding disulfide-linked heavy and light chains. In combination with the beta 7 integrin, this protein forms the E-cadherin binding integrin known as the human mucosal lymphocyte-1 antigen. This protein is preferentially expressed in human intestinal intraepithelial lymphocytes (IEL), and in addition to a role in adhesion, it may serve as an accessory molecule for IEL activation. [provided by RefSeq, Jul 2008],domain:The integrin I-domain (insert) is a VWFA domain. Integrins with I-domains do not undergo protease cleavage.,function:Integrin alpha-E/beta-7 is a receptor for E-cadherin. It mediates adhesion of intra-epithelial T-lymphocytes to epithelial cell monolayers.,induction:Integrin alpha-E/beta-7 is induced by TGFB1.,similarity:Belongs to the integrin alpha chain family.,similarity:Contains 1 VWFA domain.,similarity:Contains 5 FG-GAP repeats.,subunit:Heterodimer of an alpha and a beta subunit. The alpha subunit is composed of an heavy and a light chains linked by a disulfide bond. Alpha-E associates with beta-7.,tissue specificity:Expressed on a subclass of T-lymphocytes known as intra-epithelial lymphocytes which are located between mucosal epithelial cells.,

## Research Area

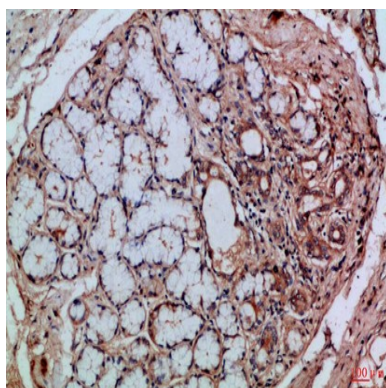
Regulates Actin and Cytoskeleton;

## Image Data

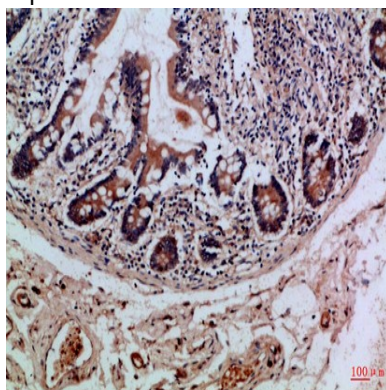


Immunohistochemical analysis of paraffin-embedded Human-tonsil, antibody was diluted at 1:100

**Product Name: Integrin  $\alpha$ E Rabbit Polyclonal Antibody**  
**Catalog #: APRab12672**



Immunohistochemical analysis of paraffin-embedded Human-tonsil, antibody was diluted at 1:100



Immunohistochemical analysis of paraffin-embedded Human-colon, antibody was diluted at 1:100

## **Note**

For research use only.