

Product Name: Integrin α 3 Rabbit Polyclonal Antibody
Catalog #: APRab12667



Summary

Production Name	Integrin α 3 Rabbit Polyclonal Antibody
Description	Rabbit Polyclonal Antibody
Host	Rabbit
Application	WB,ELISA
Reactivity	Human,Mouse,Rat

Performance

Conjugation	Unconjugated
Modification	Unmodified
Isotype	IgG
Clonality	Polyclonal
Form	Liquid
Storage	Store at 4°C short term. Aliquot and store at -20°C long term. Avoid freeze/thaw cycles.
Buffer	Liquid in PBS containing 50% glycerol, 0.5% BSA and 0.02% New type preservative N.
Purification	Affinity purification

Immunogen

Gene Name	ITGA3
Alternative Names	ITGA3; MSK18; Integrin alpha-3; CD49 antigen-like family member C; FRP-2; Galactoprotein B3; GAPB3; VLA-3 subunit alpha; CD antigen CD49c
Gene ID	3675.0
SwissProt ID	P26006.The antiserum was produced against synthesized peptide derived from human Integrin alpha3. AA range:482-531

Application

Dilution Ratio	WB 1:500 - 1:2000. ELISA: 1:40000. Not yet tested in other applications.
Molecular Weight	150kD

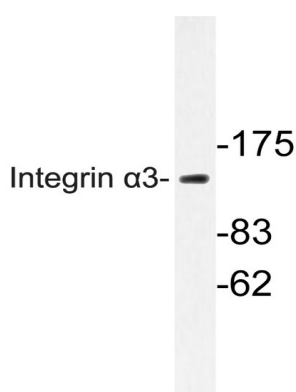
Background

integrin subunit alpha 3(ITGA3) Homo sapiens The gene encodes a member of the integrin alpha chain family of proteins. Integrins are heterodimeric integral membrane proteins composed of an alpha chain and a beta chain that function as cell surface adhesion molecules. The encoded preproprotein is proteolytically processed to generate light and heavy chains that comprise the alpha 3 subunit. This subunit joins with a beta 1 subunit to form an integrin that interacts with extracellular matrix proteins including members of the laminin family. Expression of this gene may be correlated with breast cancer metastasis. [provided by RefSeq, Oct 2015],function:Integrin alpha-3/beta-1 is a receptor for fibronectin, laminin, collagen, epiligrin, thrombospondin and CSPG4. Alpha-3/beta-1 may mediate with LGALS3 the stimulation by CSPG4 of endothelial cells migration.,PTM:Isoform alpha-3A, but not isoform alpha-3B, is phosphorylated on serine residues. Phosphorylation increases after phorbol 12-myristate 13-acetate stimulation. Isoform alpha-3A is phosphorylated on Tyr-1051.,similarity:Belongs to the integrin alpha chain family.,similarity:Contains 7 FG-GAP repeats.,subunit:Heterodimer of an alpha and a beta subunit. The alpha subunit is composed of an heavy and a light chain linked by a disulfide bond. Alpha-3 associates with beta-1. Interacts with HPS5.,tissue specificity:Isoform alpha-3A is widely expressed. Isoform alpha-3B is expressed in brain and heart. In brain, both isoforms are exclusively expressed on vascular smooth muscle cells, whereas in heart isoform alpha-3A is strongly expressed on vascular smooth muscle cells, isoform alpha-3B is detected only on endothelial vein cells.,

Research Area

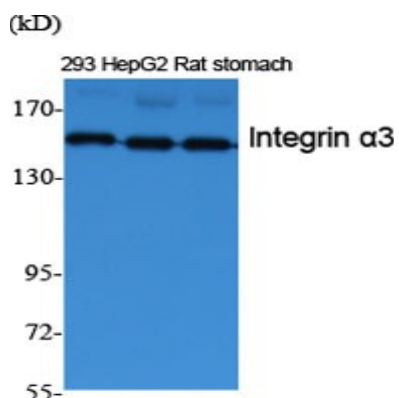
Focal adhesion;ECM-receptor interaction;Hematopoietic cell lineage;Regulates Actin and Cytoskeleton;Pathways in cancer;Small cell lung cancer;Hypertrophic cardiomyopathy (HCM);Arrhythmogenic right ventricular cardiomyopathy (ARVC);Dilated cardiomyopathy;

Image Data

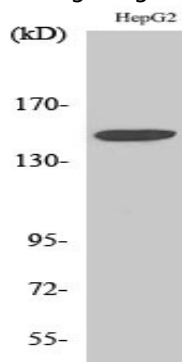


Western blot analysis of lysate from HepG2 cells, using Integrin α 3 antibody.

Product Name: Integrin α 3 Rabbit Polyclonal Antibody
Catalog #: APRab12667



Western Blot analysis of various cells using Integrin α 3 Polyclonal Antibody diluted at 1: 2000



Western Blot analysis of HepG2 cells using Integrin α 3 Polyclonal Antibody diluted at 1: 2000

Note

For research use only.