

Product Name: Integrin α 2 Rabbit Polyclonal Antibody
Catalog #: APRab12666



Summary

Production Name	Integrin α 2 Rabbit Polyclonal Antibody
Description	Rabbit Polyclonal Antibody
Host	Rabbit
Application	WB,IHC,ELISA
Reactivity	Human,Mouse,Rat

Performance

Conjugation	Unconjugated
Modification	Unmodified
Isotype	IgG
Clonality	Polyclonal
Form	Liquid
Storage	Store at 4°C short term. Aliquot and store at -20°C long term. Avoid freeze/thaw cycles.
Buffer	Liquid in PBS containing 50% glycerol, 0.5% BSA and 0.02% New type preservative N.
Purification	Affinity purification

Immunogen

Gene Name	ITGA2
Alternative Names	ITGA2; CD49B; Integrin alpha-2; CD49 antigen-like family member B; Collagen receptor; Platelet membrane glycoprotein Ia; GPIa; VLA-2 subunit alpha; CD49b
Gene ID	3673.0
SwissProt ID	P17301.The antiserum was produced against synthesized peptide derived from the C-terminal region of human ITGA2. AA range:1081-1130

Application

Dilution Ratio	WB 1:500 - 1:2000. IHC-p: 1:100-1:300. ELISA: 1:10000..
Molecular Weight	130kD

Product Name: Integrin α 2 Rabbit Polyclonal Antibody
Catalog #: APRab12666



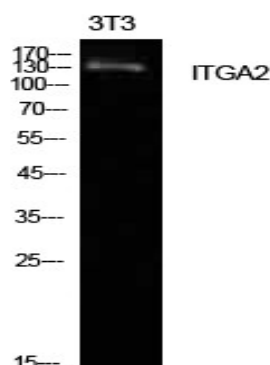
Background

integrin subunit alpha 2(ITGA2) Homo sapiens This gene encodes the alpha subunit of a transmembrane receptor for collagens and related proteins. The encoded protein forms a heterodimer with a beta subunit and mediates the adhesion of platelets and other cell types to the extracellular matrix. Loss of the encoded protein is associated with bleeding disorder platelet-type 9. Antibodies against this protein are found in several immune disorders, including neonatal alloimmune thrombocytopenia. This gene is located adjacent to a related alpha subunit gene. Alternative splicing results in multiple transcript variants. [provided by RefSeq, Aug 2012],domain:The integrin I-domain (insert) is a VWFA domain. Integrins with I-domains do not undergo protease cleavage.,function:Integrin alpha-2/beta-1 is a receptor for laminin, collagen, collagen C-propeptides, fibronectin and E-cadherin. It recognizes the proline-hydroxylated sequence G-F-P-G-E-R in collagen. It is responsible for adhesion of platelets and other cells to collagens, modulation of collagen and collagenase gene expression, force generation and organization of newly synthesized extracellular matrix.,polymorphism:Position 534 is associated with platelet-specific alloantigen HPA-5 (Br). HPA-5A/Br(a) has Lys-534 and HPA-5B/Br(b) has Glu-534. HPA-5B is involved in neonatal alloimmune thrombocytopenia (NAIT or NATP). The Lys-534-Glu polymorphism may play a role in coronary artery disease (CAD),similarity:Belongs to the integrin alpha chain family.,similarity:Contains 1 VWFA domain.,similarity:Contains 7 FG-GAP repeats.,subunit:Heterodimer of an alpha and a beta subunit. Alpha-2 associates with beta-1. Interacts with HPS5 and RAB21. Binds to human echoviruses 1 and 8 capsid proteins and acts as a receptor for these viruses. Interacts (via ITGA2 I-domain) with rotavirus A VP4; this interaction only occurs in rotavirus integrin-dependent strains, for which ITGA2 acts as a receptor.,

Research Area

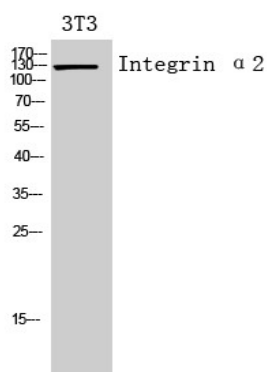
Focal adhesion;ECM-receptor interaction;Hematopoietic cell lineage;Regulates Actin and Cytoskeleton;Pathways in cancer;Small cell lung cancer;Hypertrophic cardiomyopathy (HCM);Arrhythmogenic right ventricular cardiomyopathy (ARVC);Dilated cardiomyopathy;

Image Data

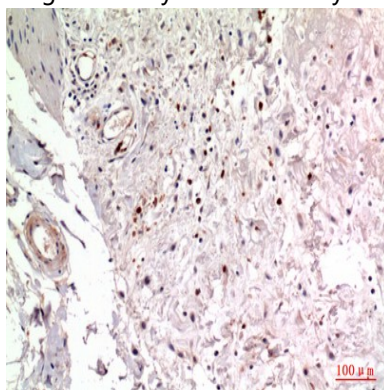


Western Blot analysis of NIH-3T3 cells using Integrin α 2 Polyclonal Antibody.. Secondary antibody was diluted at 1:20000

Product Name: Integrin α 2 Rabbit Polyclonal Antibody
Catalog #: APRab12666



Western Blot analysis of 3T3 cells using Integrin α 2 Polyclonal Antibody. Secondary antibody was diluted at 1:20000



Immunohistochemical analysis of paraffin-embedded human-colon, antibody was diluted at 1:100

Note

For research use only.