

Product Name: Inhibin β -C Rabbit Polyclonal Antibody
Catalog #: APRab12615



Summary

Production Name	Inhibin β -C Rabbit Polyclonal Antibody
Description	Rabbit Polyclonal Antibody
Host	Rabbit
Application	IHC, WB, ELISA
Reactivity	Human, Rat, Mouse

Performance

Conjugation	Unconjugated
Modification	Unmodified
Isotype	IgG
Clonality	Polyclonal
Form	Liquid
Storage	Store at 4°C short term. Aliquot and store at -20°C long term. Avoid freeze/thaw cycles.
Buffer	Liquid in PBS containing 50% glycerol, 0.5% BSA and 0.02% New type preservative N.
Purification	Affinity purification

Immunogen

Gene Name	INHBC
Alternative Names	INHBC; Inhibin beta C chain; Activin beta-C chain
Gene ID	3626.0
SwissProt ID	P55103. The antiserum was produced against synthesized peptide derived from human Inhibin beta-C. AA range: 80-129

Application

Dilution Ratio	WB 1:500 - 1:2000. IHC 1:100 - 1:300. ELISA: 1:5000..
Molecular Weight	30kD

Background

Product Name: Inhibin β -C Rabbit Polyclonal Antibody
Catalog #: APRab12615

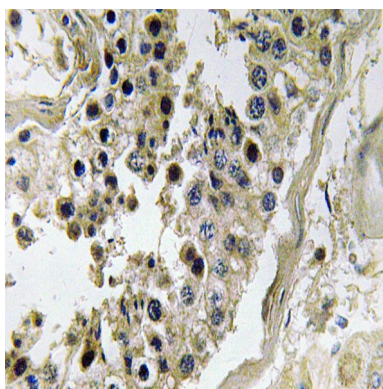


This gene encodes a member of the TGF-beta (transforming growth factor-beta) superfamily of proteins. The encoded preproprotein is proteolytically processed to generate a subunit of homodimeric and heterodimeric activin complexes. The heterodimeric complex may function in the inhibition of activin A signaling. Transgenic mice overexpressing this gene exhibit defects in testis, liver and prostate. [provided by RefSeq, Aug 2016],function:Inhibins and activins inhibit and activate, respectively, the secretion of follitropin by the pituitary gland. Inhibins/activins are involved in regulating a number of diverse functions such as hypothalamic and pituitary hormone secretion, gonadal hormone secretion, germ cell development and maturation, erythroid differentiation, insulin secretion, nerve cell survival, embryonic axial development or bone growth, depending on their subunit composition. Inhibins appear to oppose the functions of activins.,similarity:Belongs to the TGF-beta family.,subunit:Homodimeric or heterodimeric through association with alpha and beta subunits, linked by one or more disulfide bonds. Inhibins are heterodimers of one alpha and one beta subunit. Activins are homo- or heterodimers of beta subunits only.,tissue specificity:Expressed in benign prostatic hyperplasia.,

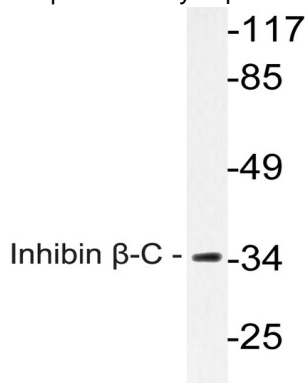
Research Area

Cytokine-cytokine receptor interaction;TGF-beta;

Image Data

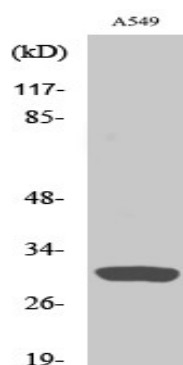


Immunohistochemistry analysis of Inhibin β -C antibody in paraffin-embedded human testis tissue.



Western blot analysis of lysate from A549 cells, using Inhibin β -C antibody.

Product Name: Inhibin β -C Rabbit Polyclonal Antibody
Catalog #: APRab12615



Western Blot analysis of various cells using Inhibin β -C Polyclonal Antibody

Note

For research use only.