

Product Name: Imp3 Rabbit Polyclonal Antibody
Catalog #: APRab12591



Summary

Production Name	Imp3 Rabbit Polyclonal Antibody
Description	Rabbit Polyclonal Antibody
Host	Rabbit
Application	WB,IHC,ELISA
Reactivity	Human,Mouse,Rat

Performance

Conjugation	Unconjugated
Modification	Unmodified
Isotype	IgG
Clonality	Polyclonal
Form	Liquid
Storage	Store at 4°C short term. Aliquot and store at -20°C long term. Avoid freeze/thaw cycles.
Buffer	Liquid in PBS containing 50% glycerol, 0.5% BSA and 0.02% New type preservative N.
Purification	Affinity purification

Immunogen

Gene Name	IMP3 C15orf12 MRPS4
Alternative Names	IMP3 C15orf12 MRPS4
Gene ID	55272.0
SwissProt ID	Q9NV31.Synthetic peptide from human protein at AA range: 135-184

Application

Dilution Ratio	WB 1:500 - 1:2000. IHC: 1:100-1:300. ELISA: 1:20000..
Molecular Weight	25kD

Background

This gene encodes the human homolog of the yeast Imp3 protein. The protein localizes to the nucleoli and interacts with

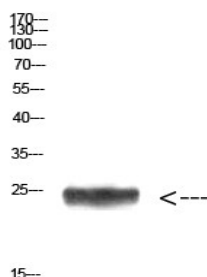
Product Name: Imp3 Rabbit Polyclonal Antibody
Catalog #: AP Rab12591



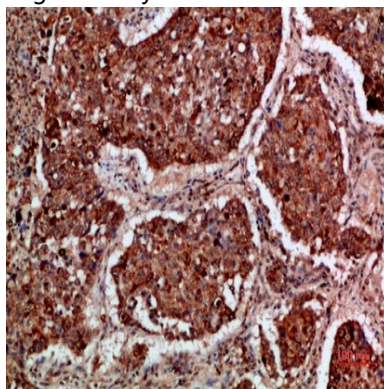
the U3 snoRNP complex. The protein contains an S4 domain. [provided by RefSeq, Jul 2008],function:Component of the 60-80S U3 small nucleolar ribonucleoprotein (U3 snoRNP). Required for the early cleavages during pre-18S ribosomal RNA processing.,similarity:Belongs to the ribosomal protein S4P family.,similarity:Contains 1 S4 RNA-binding domain.,subunit:Component of a heterotrimeric complex containing IMP3, IMP4 and MPHOSPH10. Interacts with MPHOSPH10.,

Research Area

Image Data

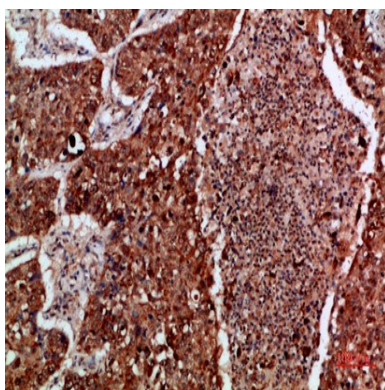


Western Blot analysis of HEPG2 cells using Antibody diluted at 1000. Secondary antibody was diluted at 1:20000

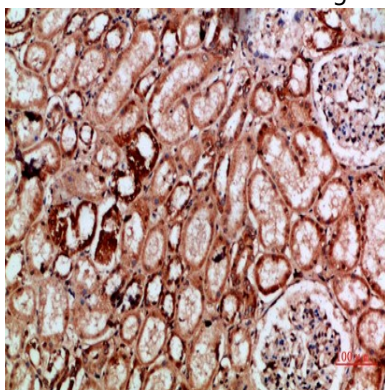


Immunohistochemical analysis of paraffin-embedded human-lung-cancer, antibody was diluted at 1:200

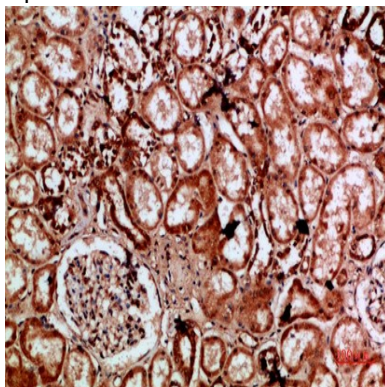
Product Name: Imp3 Rabbit Polyclonal Antibody
Catalog #: APRab12591



Immunohistochemical analysis of paraffin-embedded human-lung-cancer, antibody was diluted at 1:200



Immunohistochemical analysis of paraffin-embedded human-kidney, antibody was diluted at 1:200



Immunohistochemical analysis of paraffin-embedded human-kidney, antibody was diluted at 1:200

Note

For research use only.