

Product Name: IL-8RA Rabbit Polyclonal Antibody
Catalog #: APRab12572



Summary

Production Name	IL-8RA Rabbit Polyclonal Antibody
Description	Rabbit Polyclonal Antibody
Host	Rabbit
Application	IHC,ELISA
Reactivity	Human

Performance

Conjugation	Unconjugated
Modification	Unmodified
Isotype	IgG
Clonality	Polyclonal
Form	Liquid
Storage	Store at 4°C short term. Aliquot and store at -20°C long term. Avoid freeze/thaw cycles.
Buffer	Liquid in PBS containing 50% glycerol, 0.5% BSA and 0.02% New type preservative N.
Purification	Affinity purification

Immunogen

Gene Name	CXCR1 CMKAR1 IL8RA
Alternative Names	C-X-C chemokine receptor type 1 (CXC-R1;CXCR-1;CDw128a;High affinity interleukin-8 receptor A;IL-8R A;IL-8 receptor type 1;CD antigen CD181)
Gene ID	3577.0
SwissProt ID	P25024.Synthetic peptide from human protein at AA range: 1-50

Application

Dilution Ratio	IHC-p 1:50-200, ELISA 1:10000-20000.
Molecular Weight	

Background

Product Name: IL-8RA Rabbit Polyclonal Antibody
Catalog #: APRab12572

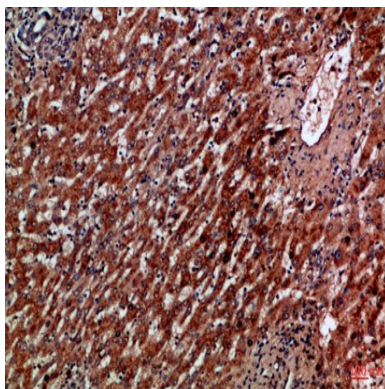


C-X-C motif chemokine receptor 1(CXCR1) Homo sapiens The protein encoded by this gene is a member of the G-protein-coupled receptor family. This protein is a receptor for interleukin 8 (IL8). It binds to IL8 with high affinity, and transduces the signal through a G-protein activated second messenger system. Knockout studies in mice suggested that this protein inhibits embryonic oligodendrocyte precursor migration in developing spinal cord. This gene, IL8RB, a gene encoding another high affinity IL8 receptor, as well as IL8RBP, a pseudogene of IL8RB, form a gene cluster in a region mapped to chromosome 2q33-q36. [provided by RefSeq, Jul 2008],function:Receptor to interleukin-8, which is a powerful neutrophils chemotactic factor. Binding of IL-8 to the receptor causes activation of neutrophils. This response is mediated via a G-protein that activate a phosphatidylinositol-calcium second messenger system. This receptor binds to IL-8 with a high affinity and to MGSA (GRO) with a low affinity.,online information:CXC chemokine receptors entry,similarity:Belongs to the G-protein coupled receptor 1 family.,

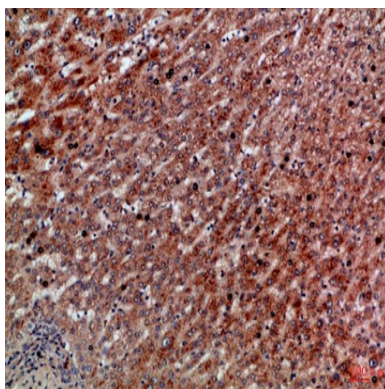
Research Area

Cytokine-cytokine receptor interaction;Chemokine;Endocytosis;Epithelial cell signaling in Helicobacter pylori infection;

Image Data

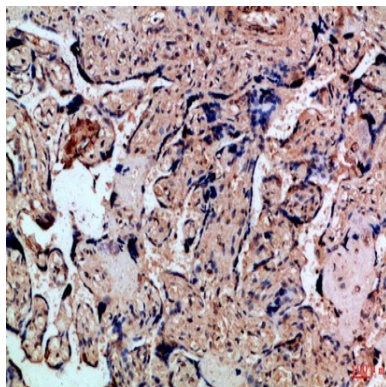


Immunohistochemical analysis of paraffin-embedded Human-liver-cancer, antibody was diluted at 1:100



Immunohistochemical analysis of paraffin-embedded Human-liver-cancer, antibody was diluted at 1:100

Product Name: IL-8RA Rabbit Polyclonal Antibody
Catalog #: APRab12572



Immunohistochemical analysis of paraffin-embedded Human-placenta, antibody was diluted at 1:100

Note

For research use only.