

**Product Name: IL-29 Rabbit Polyclonal Antibody**  
**Catalog #: APRab12546**



## Summary

<b>Production Name</b>	IL-29 Rabbit Polyclonal Antibody
<b>Description</b>	Rabbit Polyclonal Antibody
<b>Host</b>	Rabbit
<b>Application</b>	WB,ELISA
<b>Reactivity</b>	Human,Rat,Mouse

## Performance

<b>Conjugation</b>	Unconjugated
<b>Modification</b>	Unmodified
<b>Isotype</b>	IgG
<b>Clonality</b>	Polyclonal
<b>Form</b>	Liquid
<b>Storage</b>	Store at 4°C short term. Aliquot and store at -20°C long term. Avoid freeze/thaw cycles.
<b>Buffer</b>	Liquid in PBS containing 50% glycerol, 0.5% BSA and 0.02% New type preservative N.
<b>Purification</b>	Affinity purification

## Immunogen

<b>Gene Name</b>	IL29
<b>Alternative Names</b>	IL29; IFNL1; ZCYTO21; Interleukin-29; IL-29; Cytokine Zcyto21; Interferon lambda-1; IFN-lambda-1
<b>Gene ID</b>	282618.0
<b>SwissProt ID</b>	Q8IU54.The antiserum was produced against synthesized peptide derived from the Internal region of human IL29. AA range:121-170

## Application

<b>Dilution Ratio</b>	WB 1:500 - 1:2000. ELISA: 1:20000
<b>Molecular Weight</b>	21kD

**Product Name: IL-29 Rabbit Polyclonal Antibody**  
**Catalog #: APRab12546**



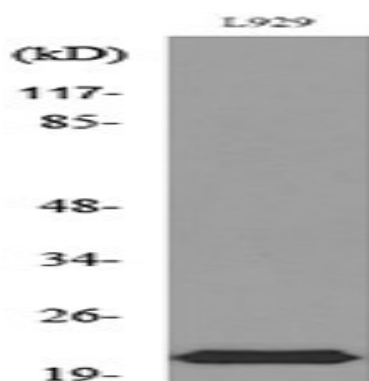
## Background

This gene encodes a cytokine distantly related to type I interferons and the IL-10 family. This gene, interleukin 28A (IL28A), and interleukin 28B (IL28B) are three closely related cytokine genes that form a cytokine gene cluster on a chromosomal region mapped to 19q13. Expression of the cytokines encoded by the three genes can be induced by viral infection. All three cytokines have been shown to interact with a heterodimeric class II cytokine receptor that consists of interleukin 10 receptor, beta (IL10RB) and interleukin 28 receptor, alpha (IL28RA). [provided by RefSeq, Jul 2008],function:Cytokine with immunomodulatory activity. May play a role in antiviral immunity. Up-regulates MHC class I antigen expression. Ligand for the heterodimeric class II cytokine receptor composed of IL10RB and IL28RA. The ligand/receptor complex seems to signal through the Jak-STAT pathway.,induction:By viral infections or double stranded RNA.,online information:Interleukin-29 entry,similarity:Belongs to the IL-28/IL-29 family.,

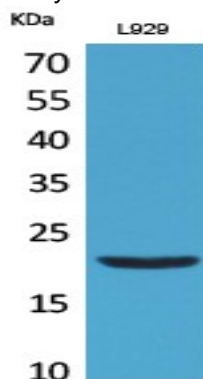
## Research Area

Cytokine-cytokine receptor interaction;Jak\_STAT;

## Image Data



Western blot analysis of lysate from L929 cells, using IL29 Antibody.



Western Blot analysis of L929 cells using IL-29 Polyclonal Antibody.. Secondary antibody was diluted at 1:20000

**Product Name: IL-29 Rabbit Polyclonal Antibody**  
**Catalog #: APRab12546**

---



**Note**

For research use only.