

**Product Name: IL-20R $\beta$  Rabbit Polyclonal Antibody**  
**Catalog #: APRab12535**



## Summary

<b>Production Name</b>	IL-20R $\beta$ Rabbit Polyclonal Antibody
<b>Description</b>	Rabbit Polyclonal Antibody
<b>Host</b>	Rabbit
<b>Application</b>	WB,ELISA
<b>Reactivity</b>	Human,Mouse

## Performance

<b>Conjugation</b>	Unconjugated
<b>Modification</b>	Unmodified
<b>Isotype</b>	IgG
<b>Clonality</b>	Polyclonal
<b>Form</b>	Liquid
<b>Storage</b>	Store at 4°C short term. Aliquot and store at -20°C long term. Avoid freeze/thaw cycles.
<b>Buffer</b>	Liquid in PBS containing 50% glycerol, 0.5% BSA and 0.02% New type preservative N.
<b>Purification</b>	Affinity purification

## Immunogen

<b>Gene Name</b>	IL20RB
<b>Alternative Names</b>	IL20RB; DIRS1; Interleukin-20 receptor subunit beta; IL-20 receptor subunit beta; IL-20R-beta; IL-20RB; IL-20R2
<b>Gene ID</b>	53833.0
<b>SwissProt ID</b>	Q6UXL0.The antiserum was produced against synthesized peptide derived from human IL20RB. AA range:141-190

## Application

<b>Dilution Ratio</b>	WB 1:500 - 1:2000. ELISA: 1:20000..
<b>Molecular Weight</b>	35kD

**Product Name: IL-20R $\beta$  Rabbit Polyclonal Antibody**  
**Catalog #: AP Rab12535**



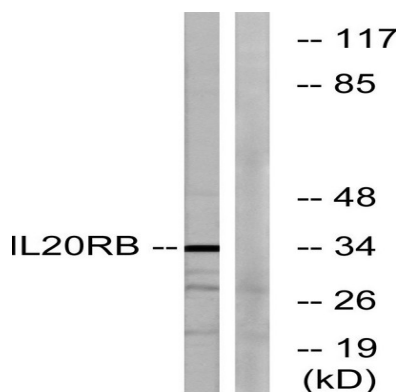
## Background

IL20RB and IL20RA (MIM 605620) form a heterodimeric receptor for interleukin-20 (IL20; MIM 605619) (Blumberg et al., 2001 [PubMed 11163236]).[supplied by OMIM, Feb 2009],function:The IL20RA/IL20RB dimer is a receptor for IL19, IL20 and IL24. The IL22RA1/IL20RB dimer is a receptor for IL20 and IL24.,similarity:Belongs to the type II cytokine receptor family.,similarity:Contains 2 fibronectin type-III domains.,subunit:Heterodimer with IL20RA and heterodimer with IL22RA1.,tissue specificity:Widely expressed with highest levels in skin and testis. Highly expressed in psoriatic skin.,

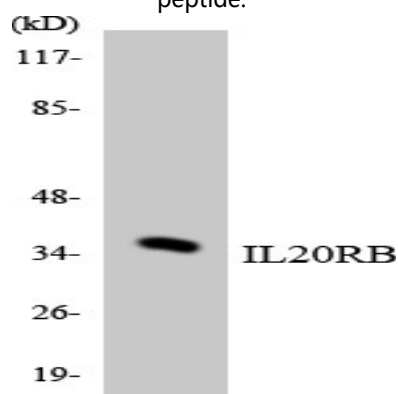
## Research Area

Cytokine-cytokine receptor interaction;Jak\_STAT;

## Image Data



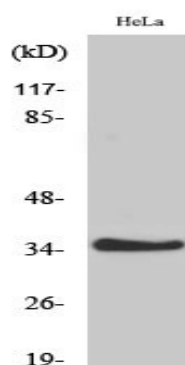
Western blot analysis of lysates from HeLa cells, using IL20RB Antibody. The lane on the right is blocked with the synthesized peptide.



Western blot analysis of the lysates from COLO205 cells using IL20RB antibody.

**Product Name: IL-20R $\beta$  Rabbit Polyclonal Antibody**  
**Catalog #: APRab12535**

---



Western Blot analysis of various cells using IL-20R $\beta$  Polyclonal Antibody

### **Note**

For research use only.