

Summary

Production Name	IL-1F10 Rabbit Polyclonal Antibody
Description	Rabbit Polyclonal Antibody
Host	Rabbit
Application	WB,IHC,ELISA
Reactivity	Human,Rat,Mouse

Performance

Conjugation	Unconjugated
Modification	Unmodified
Isotype	IgG
Clonality	Polyclonal
Form	Liquid
Storage	Store at 4°C short term. Aliquot and store at -20°C long term. Avoid freeze/thaw cycles.
Buffer	Liquid in PBS containing 50% glycerol, 0.5% BSA and 0.02% New type preservative N.
Purification	Affinity purification

Immunogen

Gene Name	IL1F10
Alternative Names	IL1F10; FIL1T; IL1HY2; FKSG75; Interleukin-1 family member 10; IL-1F10; FIL1 theta; Interleukin-1 HY2; IL-1HY2; Interleukin-1 theta; IL-1 theta
Gene ID	84639.0
SwissProt ID	Q8WWZ1.Synthesized peptide derived from Interleukin-1 family member 10 at AA range: 101-150

Application

Dilution Ratio	WB 1:500 - 1:2000. IHC-p: 1:100-1:300. ELISA: 1:10000..
Molecular Weight	17kD

Product Name: IL-1F10 Rabbit Polyclonal Antibody
Catalog #: APRab12518

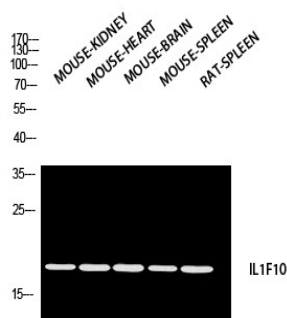


Background

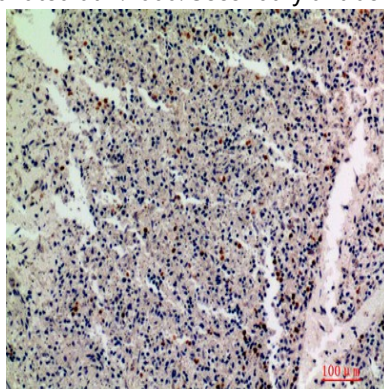
The protein encoded by this gene is a member of the interleukin 1 cytokine family. This gene and eight other interleukin 1 family genes form a cytokine gene cluster on chromosome 2. This cytokine is thought to participate in a network of interleukin 1 family members to regulate adapted and innate immune responses. Two alternatively spliced transcript variants encoding the same protein have been reported. [provided by RefSeq, Jul 2008],function: Binds soluble IL-1 receptor type 1,online information: Interleukin-1 entry,similarity: Belongs to the IL-1 family,tissue specificity: Expressed in fetal skin, spleen and tonsil. Expressed mostly in the basal epithelia of skin and in proliferating B-cells of the tonsil.,

Research Area

Image Data



Western blot analysis of MOUSE-KIDNEY MOUSE-HEART MOUSE-BRAIN MOUSE-SPLEEN RAT-SPLEEN using IL1F10 antibody. Antibody was diluted at 1:2000. Secondary antibody was diluted at 1:20000



Immunohistochemical analysis of paraffin-embedded human-spleen, antibody was diluted at 1:200

Note

For research use only.