

Summary

Production Name	IL-15R α Rabbit Polyclonal Antibody
Description	Rabbit Polyclonal Antibody
Host	Rabbit
Application	WB,
Reactivity	Human,Rat

Performance

Conjugation	Unconjugated
Modification	Unmodified
Isotype	IgG
Clonality	Polyclonal
Form	Liquid
Storage	Store at 4°C short term. Aliquot and store at -20°C long term. Avoid freeze/thaw cycles.
Buffer	Liquid in PBS containing 50% glycerol, 0.5% BSA and 0.02% New type preservative N.
Purification	Affinity purification

Immunogen

Gene Name	IL15RA
Alternative Names	IL15RA; Interleukin-15 receptor subunit alpha; IL-15 receptor subunit alpha; IL-15R-alpha; IL-15RA; CD antigen CD215
Gene ID	3601.0
SwissProt ID	Q13261.The antiserum was produced against synthesized peptide derived from human IL15RA. AA range:99-148

Application

Dilution Ratio	WB 1:500 - 1:2000. ELISA: 1:40000. Not yet tested in other applications.
Molecular Weight	32kD

Product Name: IL-15R α Rabbit Polyclonal Antibody
Catalog #: APRab12502



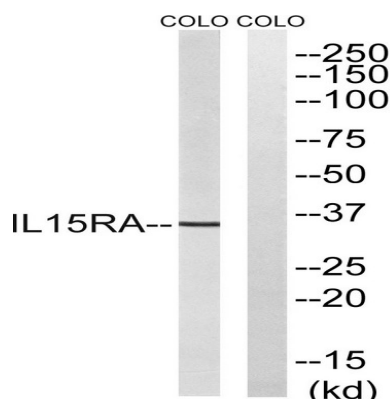
Background

This gene encodes a cytokine receptor that specifically binds interleukin 15 (IL15) with high affinity. The receptors of IL15 and IL2 share two subunits, IL2R beta and IL2R gamma. This forms the basis of many overlapping biological activities of IL15 and IL2. The protein encoded by this gene is structurally related to IL2R alpha, an additional IL2-specific alpha subunit necessary for high affinity IL2 binding. Unlike IL2RA, IL15RA is capable of binding IL15 with high affinity independent of other subunits, which suggests distinct roles between IL15 and IL2. This receptor is reported to enhance cell proliferation and expression of apoptosis inhibitor BCL2L1/BCL2-XL and BCL2. Multiple alternatively spliced transcript variants of this gene have been reported.[provided by RefSeq, Apr 2010],function:Receptor for interleukin-15. Expression of different isoforms may alter or interfere with signal transduction. Isoform 6, isoform 7, isoform 8 and isoform 9 do not bind IL15. Signal transduction involves STAT3, STAT5, STAT6, JAK2 (By similarity) and SYK.,PTM:A soluble form (sIL-15RA) arises from proteolytic shedding of the membrane-anchored receptor. The cleavage involves ADAM17/TACE (By similarity). It also binds IL-15 and thus interferes with IL-15 binding to the membrane receptor.,PTM:N-glycosylated and O-glycosylated.,PTM:Phosphorylated by activated SYK.,similarity:Contains 1 Sushi (CCP/SCR) domain.,subcellular location:Isoform 6, isoform 7, isoform 8 and isoform 9 are associated with endoplasmic reticulum, Golgi and cytoplasmic vesicles, but not with the nuclear membrane.,subcellular location:Mainly found associated with the nuclear membrane.,subunit:The interleukin-15 receptor IL15R is a heterotrimer of IL15RA, IL2RB and IL2RG. IL15RA also self-associates (By similarity). Interacts with SYK.,tissue specificity:Isoform 1, isoform 3, isoform 4, isoform 5, isoform 6, isoform 7, isoform 8 and isoform 9 are widely expressed. Expressed in fetal brain with higher expression in the hippocampus and cerebellum than in cortex and thalamus. Higher levels of soluble sIL-15RA form in comparison with membrane-bound forms is present in all brain structures.,

Research Area

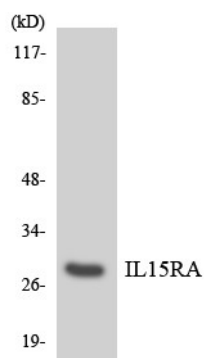
Cytokine-cytokine receptor interaction;Jak_STAT;Intestinal immune network for IgA production;

Image Data

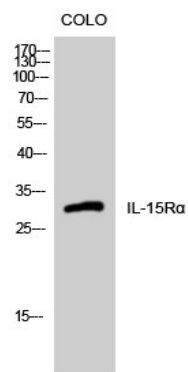


Western blot analysis of lysates from COLO cells, using IL15RA Antibody. The lane on the right is blocked with the synthesized peptide.

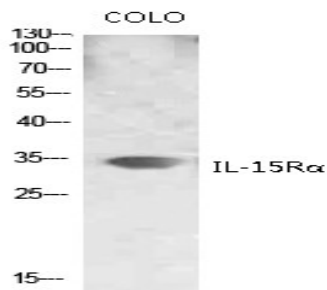
Product Name: IL-15R α Rabbit Polyclonal Antibody
Catalog #: APRab12502



Western blot analysis of the lysates from HeLa cells using IL15RA antibody.



Western Blot analysis of COLO cells using IL-15R α Polyclonal Antibody



Western blot analysis of various lysis using IL-15R α Polyclonal Antibody. Secondary antibody was diluted at 1:20000

Note

For research use only.