

**Product Name: IL-13R $\alpha$ 2 Rabbit Polyclonal Antibody**  
**Catalog #: AP Rab12500**

---



## Summary

<b>Production Name</b>	IL-13R $\alpha$ 2 Rabbit Polyclonal Antibody
<b>Description</b>	Rabbit Polyclonal Antibody
<b>Host</b>	Rabbit
<b>Application</b>	WB,IHC,ELISA
<b>Reactivity</b>	Human,Rat,Mouse

## Performance

<b>Conjugation</b>	Unconjugated
<b>Modification</b>	Unmodified
<b>Isotype</b>	IgG
<b>Clonality</b>	Polyclonal
<b>Form</b>	Liquid
<b>Storage</b>	Store at 4°C short term. Aliquot and store at -20°C long term. Avoid freeze/thaw cycles.
<b>Buffer</b>	Liquid in PBS containing 50% glycerol, 0.5% BSA and 0.02% New type preservative N.
<b>Purification</b>	Affinity purification

## Immunogen

<b>Gene Name</b>	IL13RA2 IL13RA2; IL13R; Interleukin-13 receptor subunit alpha-2; IL-13 receptor subunit alpha-2;
<b>Alternative Names</b>	IL-13R subunit alpha-2; IL-13R-alpha-2; IL-13RA2; Interleukin-13-binding protein; CD213a2
<b>Gene ID</b>	3598.0
<b>SwissProt ID</b>	Q14627.Synthesized peptide derived from Interleukin-13 receptor subunit alpha-2 at AA range: 241-290

## Application

<b>Dilution Ratio</b>	WB 1:500 - 1:2000. IHC-p: 1:100-1:300. ELISA: 1:10000..
<b>Molecular Weight</b>	44kD

**Product Name: IL-13R $\alpha$ 2 Rabbit Polyclonal Antibody**  
**Catalog #: APRab12500**



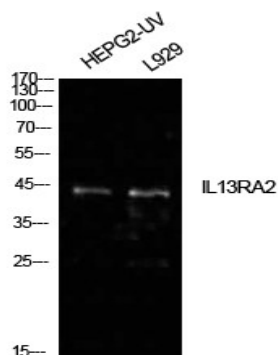
## Background

The protein encoded by this gene is closely related to IL13RA1, a subunit of the interleukin 13 receptor complex. This protein binds IL13 with high affinity, but lacks cytoplasmic domain, and does not appear to function as a signal mediator. It is reported to play a role in the internalization of IL13. [provided by RefSeq, Jul 2008],domain:The box 1 motif is required for JAK interaction and/or activation.,domain:The WSXWS motif appears to be necessary for proper protein folding and thereby efficient intracellular transport and cell-surface receptor binding.,function:Binds as a monomer with high affinity to interleukin 13 (IL13), but not to IL4.,similarity:Belongs to the type I cytokine receptor family. Type 5 subfamily.,similarity:Contains 1 fibronectin type-III domain.,

## Research Area

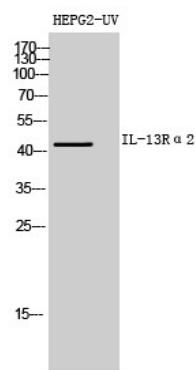
Jak\_STAT;

## Image Data



Western Blot analysis of HepG2 (UV) , L929 cells using IL-13R $\alpha$ 2 Polyclonal Antibody. Antibody was diluted at 1:500.

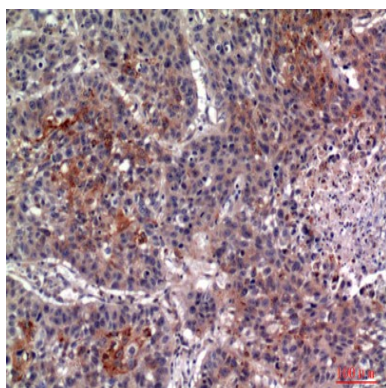
Secondary antibody was diluted at 1:20000



Western Blot analysis of HEPG2-UV cells using IL-13R $\alpha$ 2 Polyclonal Antibody diluted at 1 : 500. Secondary antibody was diluted at 1:20000

**Product Name: IL-13R $\alpha$ 2 Rabbit Polyclonal Antibody**  
**Catalog #: APRab12500**

---



Immunohistochemical analysis of paraffin-embedded human-lung, antibody was diluted at 1:100

### **Note**

For research use only.