

## Summary

<b>Production Name</b>	IKK $\alpha$ Rabbit Polyclonal Antibody
<b>Description</b>	Rabbit Polyclonal Antibody
<b>Host</b>	Rabbit
<b>Application</b>	IHC, WB,
<b>Reactivity</b>	Human, Mouse, Rat

## Performance

<b>Conjugation</b>	Unconjugated
<b>Modification</b>	Unmodified
<b>Isotype</b>	IgG
<b>Clonality</b>	Polyclonal
<b>Form</b>	Liquid
<b>Storage</b>	Store at 4°C short term. Aliquot and store at -20°C long term. Avoid freeze/thaw cycles.
<b>Buffer</b>	Liquid in PBS containing 50% glycerol, 0.5% BSA and 0.02% New type preservative N.
<b>Purification</b>	Affinity purification

## Immunogen

<b>Gene Name</b>	CHUK CHUK; IKKA; TCF16; Inhibitor of nuclear factor kappa-B kinase subunit alpha; I-kappa-B kinase alpha; IKK-A; IKK-alpha; IkbKA; IkappaB kinase; Conserved helix-loop-helix ubiquitous kinase; I-kappa-B kinase 1; IKK1; Nuclear factor NF-kappa-B
<b>Alternative Names</b>	
<b>Gene ID</b>	1147.0
<b>SwissProt ID</b>	O15111. The antiserum was produced against synthesized peptide derived from human IKK-alpha. AA range:15-64

## Application

<b>Dilution Ratio</b>	WB 1:500 - 1:2000. IHC 1:100 - 1:300. ELISA: 1:10000..
<b>Molecular Weight</b>	85kD

## Background

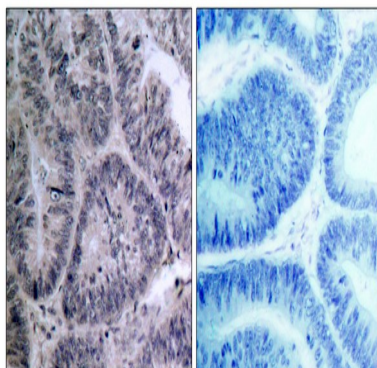
This gene encodes a member of the serine/threonine protein kinase family. The encoded protein, a component of a cytokine-activated protein complex that is an inhibitor of the essential transcription factor NF-kappa-B complex, phosphorylates sites that trigger the degradation of the inhibitor via the ubiquitination pathway, thereby activating the transcription factor. [provided by RefSeq, Jul 2008], catalytic activity: ATP + [I-kappa-B protein] = ADP + [I-kappa-B phosphoprotein], enzyme regulation: Activated when phosphorylated and inactivated when dephosphorylated, function: Acts as part of the IKK complex in the conventional pathway of NF-kappa-B activation and phosphorylates inhibitors of NF-kappa-B thus leading to the dissociation of the inhibitor/NF-kappa-B complex and ultimately the degradation of the inhibitor. As part of the non-canonical pathway of NF-kappa-B activation, the MAP3K14-activated CHUK/IKKA homodimer phosphorylates NFKB2/p100 associated with RelB, inducing its proteolytic processing to NFKB2/p52 and the formation of NF-kappa-B RelB-p52 complexes. Also phosphorylates NCOA3. Phosphorylates 'Ser-10' of histone H3 at NF-kappa-B-regulated promoters during inflammatory responses triggered by cytokines, PTM: Phosphorylated by MAP3K14/NIK, AKT and to a lesser extent by MEKK1, and dephosphorylated by PP2A. Autophosphorylated, similarity: Belongs to the protein kinase superfamily, similarity: Belongs to the protein kinase superfamily. Ser/Thr protein kinase family. I-kappa-B kinase subfamily, similarity: Contains 1 protein kinase domain, subcellular location: Shuttles between the cytoplasm and the nucleus, subunit: Component of the I-kappa-B-kinase (IKK) core complex consisting of CHUK, IKBKB and IKBKG; probably four alpha/CHUK-beta/IKBKB dimers are associated with four gamma/IKBKG subunits. The IKK core complex seems to associate with regulatory or adapter proteins to form a IKK-signalosome holo-complex. Part of a complex composed of NCOA2, NCOA3, CHUK/IKKA, IKBKB, IKBKG and CREBBP. Part of a 70-90 kDa complex at least consisting of CHUK/IKKA, IKBKB, NFKBIA, RELA, IKBKAP and MAP3K14. Directly interacts with IKK-gamma/NEMO and TRPC4AP (By similarity). May interact with TRAF2. Interacts with NALP2. May interact with MAVS/IPS1, tissue specificity: Widely expressed,

## Research Area

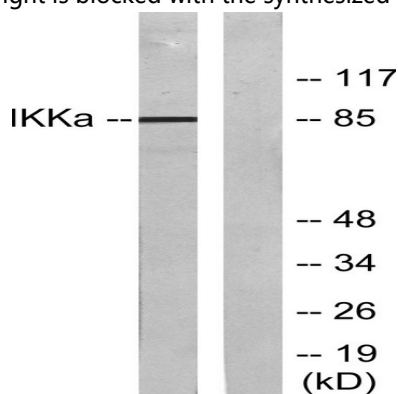
T\_Cell\_Receptor; Insulin Receptor; B\_Cell\_Antigen; Stem cell pathway; Toll\_Like; MAPK\_ERK\_Growth; MAPK\_G\_Protein; PI3K/Akt; NF\_kappaB; Protein\_Acetylation

## Image Data

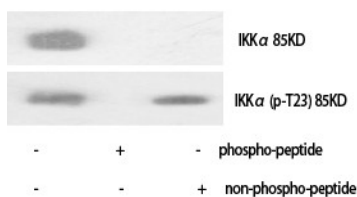
**Product Name: IKK $\alpha$  Rabbit Polyclonal Antibody**  
**Catalog #: APRab12476**



Immunohistochemistry analysis of paraffin-embedded human colon carcinoma tissue, using IKK-alpha Antibody. The picture on the right is blocked with the synthesized peptide.



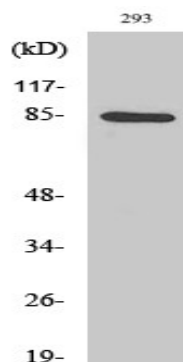
Western blot analysis of lysates from 293 cells, treated with EGF, using IKK-alpha Antibody. The lane on the right is blocked with the synthesized peptide.



Western Blot analysis of various cells using IKK $\alpha$  Polyclonal Antibody diluted at 1: 1000

**Product Name: IKK $\alpha$  Rabbit Polyclonal Antibody**  
**Catalog #: APRab12476**

---



Western Blot analysis of 293 cells using IKK $\alpha$  Polyclonal Antibody diluted at 1: 1000

### **Note**

For research use only.