

**Product Name: IGSF4C Rabbit Polyclonal Antibody**  
**Catalog #: APRab12455**



## Summary

<b>Production Name</b>	IGSF4C Rabbit Polyclonal Antibody
<b>Description</b>	Rabbit Polyclonal Antibody
<b>Host</b>	Rabbit
<b>Application</b>	IF,IHC,WB,ELISA
<b>Reactivity</b>	Human,Mouse,Rat

## Performance

<b>Conjugation</b>	Unconjugated
<b>Modification</b>	Unmodified
<b>Isotype</b>	IgG
<b>Clonality</b>	Polyclonal
<b>Form</b>	Liquid
<b>Storage</b>	Store at 4°C short term. Aliquot and store at -20°C long term. Avoid freeze/thaw cycles.
<b>Buffer</b>	Liquid in PBS containing 50% glycerol, 0.5% BSA and 0.02% New type preservative N.
<b>Purification</b>	Affinity purification

## Immunogen

<b>Gene Name</b>	CADM4
<b>Alternative Names</b>	CADM4; IGSF4C; NECL4; TSLL2; Cell adhesion molecule 4; Immunoglobulin superfamily member 4C; IgSF4C; Nectin-like protein 4; NECL-4; TSLC1-like protein 2
<b>Gene ID</b>	199731.0
<b>SwissProt ID</b>	Q8NFZ8.The antiserum was produced against synthesized peptide derived from human CADM4. AA range:339-388

## Application

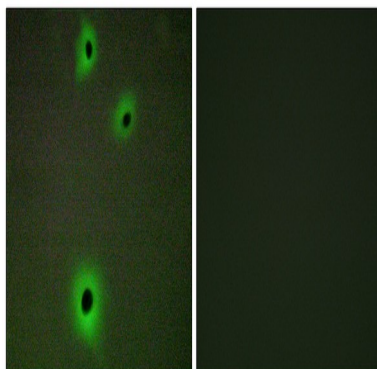
<b>Dilution Ratio</b>	WB 1:500 - 1:2000. IHC 1:100 - 1:300. IF 1:200 - 1:1000. ELISA: 1:20000. Not yet tested in other applications.
<b>Molecular Weight</b>	48kD

## Background

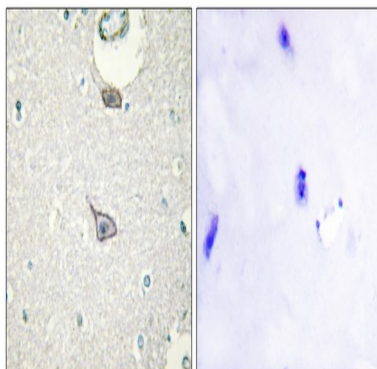
function:Involved in the cell-cell adhesion. Has calcium- and magnesium-independent cell-cell adhesion activity. May have tumor-suppressor activity.,PTM:N-glycosylated.,similarity:Belongs to the nectin family.,similarity:Contains 1 Ig-like V-type (immunoglobulin-like) domain.,similarity:Contains 2 Ig-like C2-type (immunoglobulin-like) domains.,subunit:Monomer and homodimer.,tissue specificity:Expressed in brain, prostate, brain, kidney and some other organs.,function:Involved in the cell-cell adhesion. Has calcium- and magnesium-independent cell-cell adhesion activity. May have tumor-suppressor activity.,PTM:N-glycosylated.,similarity:Belongs to the nectin family.,similarity:Contains 1 Ig-like V-type (immunoglobulin-like) domain.,similarity:Contains 2 Ig-like C2-type (immunoglobulin-like) domains.,subunit:Monomer and homodimer.,tissue specificity:Expressed in brain, prostate, brain, kidney and some other organs.,

## Research Area

## Image Data

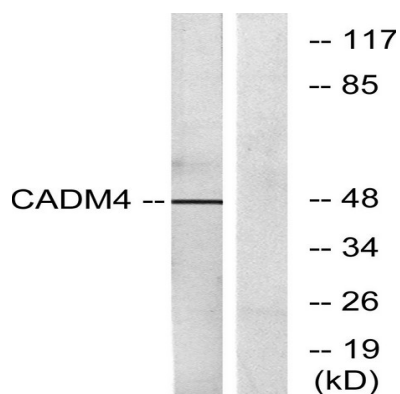


Immunofluorescence analysis of A549 cells, using CADM4 Antibody. The picture on the right is blocked with the synthesized peptide.

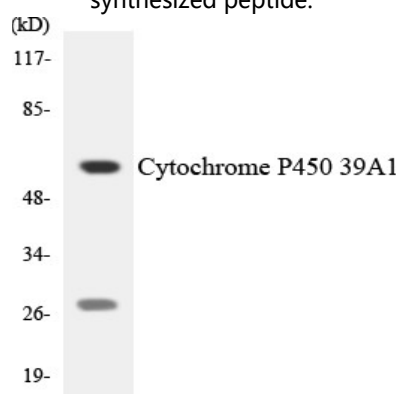


Immunohistochemistry analysis of paraffin-embedded human brain tissue, using CADM4 Antibody. The picture on the right is blocked with the synthesized peptide.

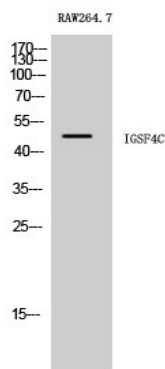
**Product Name: IGSF4C Rabbit Polyclonal Antibody**  
**Catalog #: APRab12455**



Western blot analysis of lysates from RAW264.7 cells, using CADM4 Antibody. The lane on the right is blocked with the synthesized peptide.



Western blot analysis of the lysates from HeLa cells using Cytochrome P450 39A1 antibody.



Western Blot analysis of RAW264.7 cells using IGSF4C Polyclonal Antibody

## Note

For research use only.