

Product Name: IGFBP3 Rabbit Polyclonal Antibody
Catalog #: APRab12430



Summary

Production Name	IGFBP3 Rabbit Polyclonal Antibody
Description	Rabbit Polyclonal Antibody
Host	Rabbit
Application	IHC, WB, ELISA
Reactivity	Human, Mouse

Performance

Conjugation	Unconjugated
Modification	Unmodified
Isotype	IgG
Clonality	Polyclonal
Form	Liquid
Storage	Store at 4°C short term. Aliquot and store at -20°C long term. Avoid freeze/thaw cycles.
Buffer	Liquid in PBS containing 50% glycerol, 0.5% BSA and 0.02% New type preservative N.
Purification	Affinity purification

Immunogen

Gene Name	IGFBP3
Alternative Names	IGFBP3; IBP3; Insulin-like growth factor-binding protein 3; IBP-3; IGF-binding protein 3; IGFBP-3
Gene ID	3486.0
SwissProt ID	P17936. The antiserum was produced against synthesized peptide derived from human IGFBP-3. AA range: 151-200

Application

Dilution Ratio	WB 1:500-2000; IHC 1:100-500; ELISA 1:5000-20000
Molecular Weight	31kD

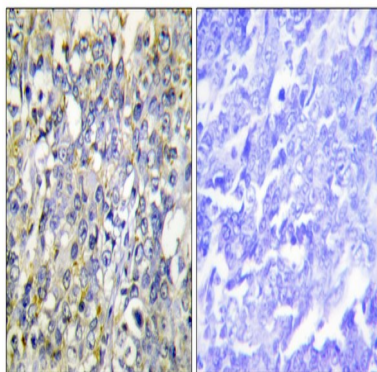
Background

This gene is a member of the insulin-like growth factor binding protein (IGFBP) family and encodes a protein with an IGFBP domain and a thyroglobulin type-I domain. The protein forms a ternary complex with insulin-like growth factor acid-labile subunit (IGFALS) and either insulin-like growth factor (IGF) I or II. In this form, it circulates in the plasma, prolonging the half-life of IGFs and altering their interaction with cell surface receptors. Alternate transcriptional splice variants, encoding different isoforms, have been characterized. [provided by RefSeq, Jul 2008],developmental stage:IGFBP3 levels are higher during extrauterine life and peak during puberty.,domain:The thyroglobulin type-1 domain mediates interaction with HN.,function:IGF-binding proteins prolong the half-life of the IGFs and have been shown to either inhibit or stimulate the growth promoting effects of the IGFs on cell culture. They alter the interaction of IGFs with their cell surface receptors.,induction:IGFBP3 levels increase in the presence of IGF1, insulin and other growth-stimulating factors such as growth hormone, epidermal growth factor, and phorbol esters.,online information:The Singapore human mutation and polymorphism database,similarity:Contains 1 IGFBP N-terminal domain.,similarity:Contains 1 thyroglobulin type-1 domain.,subunit:Interacts with XLKD1 (By similarity). Binds IGF2 more than IGF1. Forms a ternary complex of about 140 to 150 kDa with IGF1 or IGF2 and a 85 kDa glycoprotein (ALS). Interacts with HN.,tissue specificity:Expressed by most tissues.,

Research Area

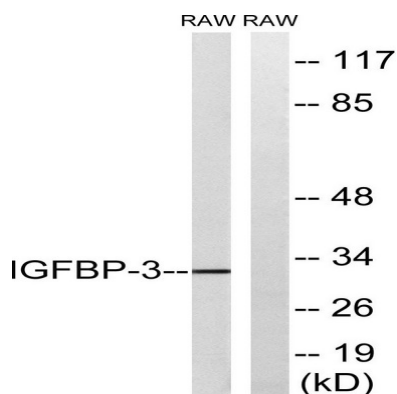
p53;

Image Data

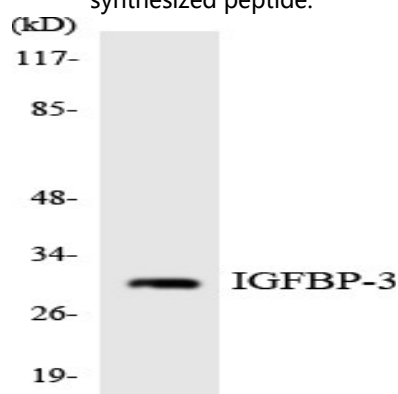


Immunohistochemistry analysis of paraffin-embedded human lung carcinoma tissue, using IGFBP-3 Antibody. The picture on the right is blocked with the synthesized peptide.

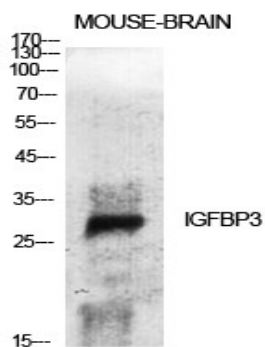
Product Name: IGFBP3 Rabbit Polyclonal Antibody
Catalog #: APRab12430



Western blot analysis of lysates from RAW246.7 cells, using IGFBP-3 Antibody. The lane on the right is blocked with the synthesized peptide.

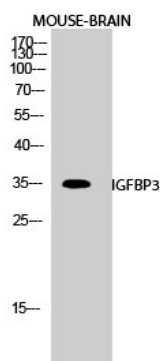


Western blot analysis of the lysates from HT-29 cells using IGFBP-3 antibody.



Western Blot analysis of various cells using IGFBP3 Polyclonal Antibody diluted at 1 : 500 cells nucleus extracted by Minute TM Cytoplasmic and Nuclear Fractionation kit (SC-003, Inventbiotech, MN, USA) .

Product Name: IGFBP3 Rabbit Polyclonal Antibody
Catalog #: APRab12430



Western Blot analysis of MOUSE-BRAIN cells using IGFBP3 Polyclonal Antibody diluted at 1: 500 cells nucleus extracted by Minute TM Cytoplasmic and Nuclear Fractionation kit (SC-003, Invent biotech, MN, USA) .

Note

For research use only.