

Product Name: IFNA2 Rabbit Polyclonal Antibody
Catalog #: APRab12390



Summary

Production Name	IFNA2 Rabbit Polyclonal Antibody
Description	Rabbit Polyclonal Antibody
Host	Rabbit
Application	WB
Reactivity	Human,Rat,Mouse

Performance

Conjugation	Unconjugated
Modification	Unmodified
Isotype	IgG
Clonality	Polyclonal
Form	Liquid
Storage	Store at 4°C short term. Aliquot and store at -20°C long term. Avoid freeze/thaw cycles.
Buffer	Liquid in PBS containing 50% glycerol, and 0.02% New type preservative N.
Purification	Affinity purification

Immunogen

Gene Name	IFNA2
Alternative Names	
Gene ID	3440.0
SwissProt ID	P01563.Synthesized peptide derived from part region of human protein

Application

Dilution Ratio	WB 1:500-2000 ELISA 1:5000-20000
Molecular Weight	20kD

Background

This gene is a member of the alpha interferon gene cluster on chromosome 9. The encoded protein is a cytokine produced in response to viral infection. Use of the recombinant form of this protein has been shown to be effective in reducing the

Product Name: IFNA2 Rabbit Polyclonal Antibody
Catalog #: APRab12390

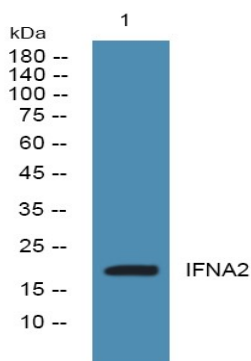


symptoms and duration of the common cold. [provided by RefSeq, Jun 2011],function:Produced by macrophages, IFN-alpha have antiviral activities. Interferon stimulates the production of two enzymes: a protein kinase and an oligoadenylate synthetase.,pharmaceutical:Available under the names Roferon-A (Roche) or Intron-A (Schering-Plough). Used as an anticancer drug for its antiproliferative activity.,polymorphism:Three forms exist; alpha-2a (shown here), alpha-2b and alpha-2c.,similarity:Belongs to the alpha/beta interferon family.,

Research Area

Cytokine-cytokine receptor interaction;Regulation of autophagy;Antigen processing and presentation;Toll_Like;RIG-I-like receptor;Cytosolic DNA-sensing pathway;Jak_STAT;Natural killer cell mediated cytotoxicity;Autoimmune thyroid disease;

Image Data



Western blot analysis of lysates from SW480 cells, primary antibody was diluted at 1:1000, 4°C over night

Note

For research use only.