

## Summary

<b>Production Name</b>	IFITM3 Rabbit Polyclonal Antibody
<b>Description</b>	Rabbit Polyclonal Antibody
<b>Host</b>	Rabbit
<b>Application</b>	IF, WB,
<b>Reactivity</b>	Human, Rat, Mouse

## Performance

<b>Conjugation</b>	Unconjugated
<b>Modification</b>	Unmodified
<b>Isotype</b>	IgG
<b>Clonality</b>	Polyclonal
<b>Form</b>	Liquid
<b>Storage</b>	Store at 4°C short term. Aliquot and store at -20°C long term. Avoid freeze/thaw cycles.
<b>Buffer</b>	Liquid in PBS containing 50% glycerol, 0.5% BSA and 0.02% New type preservative N.
<b>Purification</b>	Affinity purification

## Immunogen

<b>Gene Name</b>	IFITM3
<b>Alternative Names</b>	IFITM3; Interferon-induced transmembrane protein 3; Dispanin subfamily A member 2b; DSPA2b; Interferon-inducible protein 1-8U
<b>Gene ID</b>	10410.0
<b>SwissProt ID</b>	Q01628. The antiserum was produced against synthesized peptide derived from human IFM3. AA range:1-50

## Application

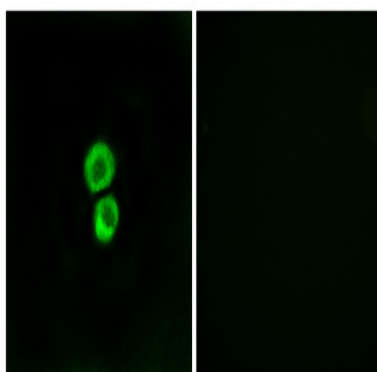
<b>Dilution Ratio</b>	WB 1:500 - 1:2000. IF 1:200 - 1:1000. ELISA: 1:40000. Not yet tested in other applications.
<b>Molecular Weight</b>	15kD

## Background

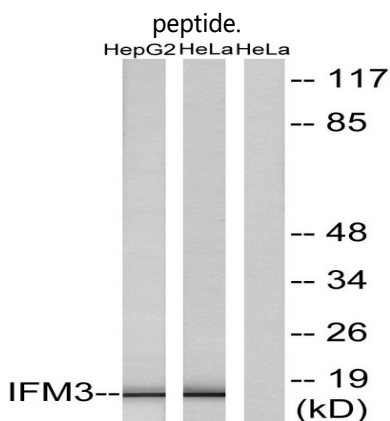
The protein encoded by this gene is an interferon-induced membrane protein that helps confer immunity to influenza A H1N1 virus, West Nile virus, and dengue virus. Two transcript variants, only one of them protein-coding, have been found for this gene. Another variant encoding an N-terminally truncated isoform has been reported, but the full-length nature of this variant has not been determined. [provided by RefSeq, May 2012],induction:By alpha and gamma interferons.,similarity:Belongs to the CD225 family.,

## Research Area

## Image Data

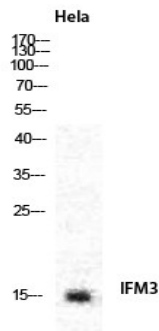


Immunofluorescence analysis of MCF7 cells, using IFM3 Antibody. The picture on the right is blocked with the synthesized

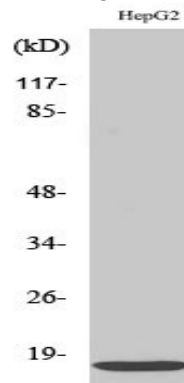


Western blot analysis of lysates from HepG2 and HeLa cells, using IFM3 Antibody. The lane on the right is blocked with the synthesized peptide.

**Product Name: IFITM3 Rabbit Polyclonal Antibody**  
**Catalog #: APRab12383**



Western Blot analysis of various cells using IFITM3 Polyclonal Antibody diluted at 1: 2000



Western Blot analysis of HeLa cells using IFITM3 Polyclonal Antibody diluted at 1: 2000

### **Note**

For research use only.