

Product Name: IFI27 Rabbit Polyclonal Antibody
Catalog #: APRab12373



Summary

Production Name	IFI27 Rabbit Polyclonal Antibody
Description	Rabbit Polyclonal Antibody
Host	Rabbit
Application	WB
Reactivity	Human,Rat,Mouse

Performance

Conjugation	Unconjugated
Modification	Unmodified
Isotype	IgG
Clonality	Polyclonal
Form	Liquid
Storage	Store at 4°C short term. Aliquot and store at -20°C long term. Avoid freeze/thaw cycles.
Buffer	Liquid in PBS containing 50% glycerol, and 0.02% New type preservative N.
Purification	Affinity purification

Immunogen

Gene Name	IFI27
Alternative Names	
Gene ID	3429.0
SwissProt ID	P40305.Synthesized peptide derived from human protein . at AA range: 1-80

Application

Dilution Ratio	WB 1:500-2000 ELISA 1:5000-20000
Molecular Weight	13kD

Background

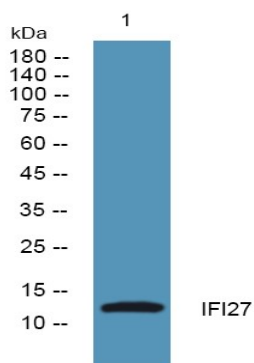
induction:By alpha interferons.,similarity:Belongs to the IFI6/IFI27 family.,induction:By alpha interferons.,similarity:Belongs to the IFI6/IFI27 family.,

Product Name: IFI27 Rabbit Polyclonal Antibody
Catalog #: APRab12373



Research Area

Image Data



Western blot analysis of lysates from HCT116 cells, primary antibody was diluted at 1:1000, 4° over night

Note

For research use only.