

Product Name: IFI-16 Rabbit Polyclonal Antibody
Catalog #: APRab12372



Summary

Production Name	IFI-16 Rabbit Polyclonal Antibody
Description	Rabbit Polyclonal Antibody
Host	Rabbit
Application	WB,ELISA
Reactivity	Human,Rat,Mouse

Performance

Conjugation	Unconjugated
Modification	Unmodified
Isotype	IgG
Clonality	Polyclonal
Form	Liquid
Storage	Store at 4°C short term. Aliquot and store at -20°C long term. Avoid freeze/thaw cycles.
Buffer	Liquid in PBS containing 50% glycerol, 0.5% BSA and 0.02% New type preservative N.
Purification	Affinity purification

Immunogen

Gene Name	IFI16
Alternative Names	IFI16; IFNGIP1; Gamma-interferon-inducible protein 16; Ifi-16; Interferon-inducible myeloid differentiation transcriptional activator
Gene ID	3428.0
SwissProt ID	Q16666.The antiserum was produced against synthesized peptide derived from human IFI16. AA range:731-780

Application

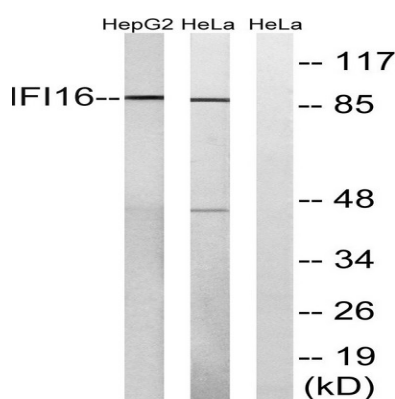
Dilution Ratio	WB 1:500 - 1:2000. ELISA: 1:40000.
Molecular Weight	88kD

Background

This gene encodes a member of the HIN-200 (hematopoietic interferon-inducible nuclear antigens with 200 amino acid repeats) family of cytokines. The encoded protein contains domains involved in DNA binding, transcriptional regulation, and protein-protein interactions. The protein localizes to the nucleoplasm and nucleoli, and interacts with p53 and retinoblastoma-1. It modulates p53 function, and inhibits cell growth in the Ras/Raf signaling pathway. Alternatively spliced transcript variants encoding different isoforms have been found for this gene. [provided by RefSeq, Apr 2011],function:May function as a transcriptional repressor. Could have a role in the regulation of hematopoeitic differentiation through activation of unknown target genes. Controls cellular proliferation by modulating the functions of cell cycle regulatory factors including p53/TP53 and the retinoblastoma protein. May be involved in the senescence of prostate epithelial cells.,induction:Strongly induced by gamma interferon and, to a lesser extent, by alpha interferon. In HL-60 cells, maximum induction by gamma-interferon occurs within 12 hours whereas, for alpha-interferon, only 10-fold induction was observed after 36 hours. Induced in vitro by dimethylsulfoxide, retinoic acid and 1,25 dihydroxyvitamin D3.,PTM:Isoform 3 seems to show a minor degree of complex carbohydrate addition.,PTM:Phosphorylated on Ser and Thr.,sequence caution:Intron retention.,similarity:Belongs to the HIN-200 family.,similarity:Contains 1 DAPIN domain.,similarity:Contains 2 HIN-200 domains.,subunit:Isoform 1, isoform 2 and isoform 3 can homo- and hetero-dimerize. Binds double-stranded DNA and cell cycle regulatory factors including p53 and the retinoblastoma protein.,tissue specificity:Expressed in peripheral blood leukocytes, fibroblasts and lymphoid cells. Present in myeloid precursors (CD34+) and throughout monocyte development, but its expression is down-regulated in erythroid and polymorphonuclear precursor cells. Present in prostate, ovary and breast (at protein level),

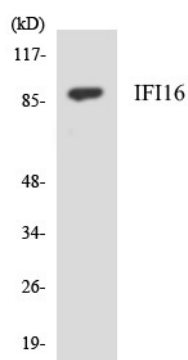
Research Area

Image Data



Western blot analysis of lysates from HeLa and HepG2 cells, using IFI16 Antibody. The lane on the right is blocked with the synthesized peptide.

Product Name: IFI-16 Rabbit Polyclonal Antibody
Catalog #: APRab12372



Western blot analysis of the lysates from HepG2 cells using IFI16 antibody.

Note

For research use only.