

Summary

Production Name	IDH3A Rabbit Polyclonal Antibody
Description	Rabbit Polyclonal Antibody
Host	Rabbit
Application	WB,IHC,ELISA
Reactivity	Human,Mouse,Rat

Performance

Conjugation	Unconjugated
Modification	Unmodified
Isotype	IgG
Clonality	Polyclonal
Form	Liquid
Storage	Store at 4°C short term. Aliquot and store at -20°C long term. Avoid freeze/thaw cycles.
Buffer	Liquid in PBS containing 50% glycerol, 0.5% BSA and 0.02% New type preservative N.
Purification	Affinity purification

Immunogen

Gene Name	IDH3A
Alternative Names	IDH3A; Isocitrate dehydrogenase [NAD] subunit alpha, mitochondrial; Isocitric dehydrogenase subunit alpha; NAD(+)-specific ICDH subunit alpha
Gene ID	3419.0
SwissProt ID	P50213.Synthesized peptide derived from the Internal region of human IDH3A.

Application

Dilution Ratio	WB 1:500 - 1:2000. IHC-p: 1:100-1:300. ELISA: 1:20000..
Molecular Weight	39kD

Background

Product Name: IDH3A Rabbit Polyclonal Antibody
Catalog #: APRab12355

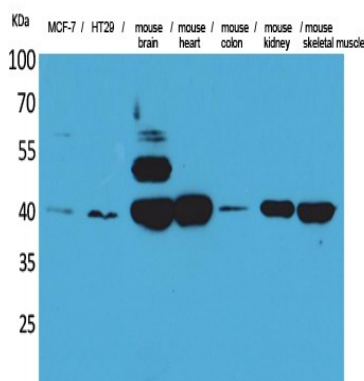


Isocitrate dehydrogenases catalyze the oxidative decarboxylation of isocitrate to 2-oxoglutarate. These enzymes belong to two distinct subclasses, one of which utilizes NAD(+) as the electron acceptor and the other NADP(+). Five isocitrate dehydrogenases have been reported: three NAD(+)-dependent isocitrate dehydrogenases, which localize to the mitochondrial matrix, and two NADP(+)-dependent isocitrate dehydrogenases, one of which is mitochondrial and the other predominantly cytosolic. NAD(+)-dependent isocitrate dehydrogenases catalyze the allosterically regulated rate-limiting step of the tricarboxylic acid cycle. Each isozyme is a heterotetramer that is composed of two alpha subunits, one beta subunit, and one gamma subunit. The protein encoded by this gene is the alpha subunit of one isozyme of NAD(+)-dependent isocitrate dehydrogenase. [provided by RefSeq, Jul 2008],catalytic activity:Isocitrate + NAD(+) = 2-oxoglutarate + CO(2) + NADH.,cofactor: Binds 1 magnesium or manganese ion per subunit.,similarity: Belongs to the isocitrate and isopropylmalate dehydrogenases family.,subunit: Heterooligomer of subunits alpha, beta, and gamma in the apparent ratio of 2:1:1.,

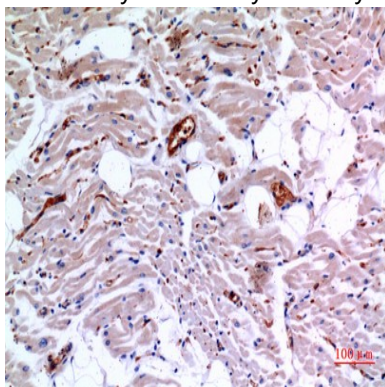
Research Area

Citrate cycle (TCA cycle);

Image Data

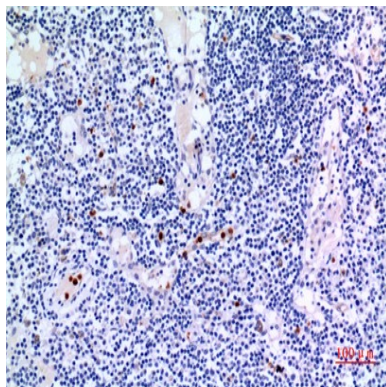


Western Blot analysis of MCF-7, HT29, mouse brain, mouse heart, mouse colon, mouse kidney, mouse skeletal muscle cells using IDH3A Polyclonal Antibody.. Secondary antibody was diluted at 1:20000



Immunohistochemical analysis of paraffin-embedded human- \heartsuit , antibody was diluted at 1:100

Product Name: IDH3A Rabbit Polyclonal Antibody
Catalog #: APRab12355



Immunohistochemical analysis of paraffin-embedded human-lymph-gland, antibody was diluted at 1:100

Note

For research use only.