

Product Name: I20L2 Rabbit Polyclonal Antibody
Catalog #: APRab12317



Summary

| | |
|------------------------|----------------------------------|
| Production Name | I20L2 Rabbit Polyclonal Antibody |
| Description | Rabbit Polyclonal Antibody |
| Host | Rabbit |
| Application | WB |
| Reactivity | Human,Rat,Mouse |

Performance

| | |
|---------------------|------------------------------------------------------------------------------------------|
| Conjugation | Unconjugated |
| Modification | Unmodified |
| Isotype | IgG |
| Clonality | Polyclonal |
| Form | Liquid |
| Storage | Store at 4°C short term. Aliquot and store at -20°C long term. Avoid freeze/thaw cycles. |
| Buffer | Liquid in PBS containing 50% glycerol, and 0.02% New type preservative N. |
| Purification | Affinity purification |

Immunogen

| | |
|--------------------------|----------------------------------------------------------------------|
| Gene Name | ISG20L2 HSD-38 HSD38 |
| Alternative Names | |
| Gene ID | 81875.0 |
| SwissProt ID | Q9H9L3.Synthesized peptide derived from part region of human protein |

Application

| | |
|-------------------------|----------------------------------|
| Dilution Ratio | WB 1:500-2000 ELISA 1:5000-20000 |
| Molecular Weight | 38kD |

Background

This gene encodes a 3'-5' exonuclease that may be involved in the processing of the 12S pre-rRNA. Pseudogenes have been identified on chromosomes 6 and 11. [provided by RefSeq, Dec 2014],function:3'-> 5'-

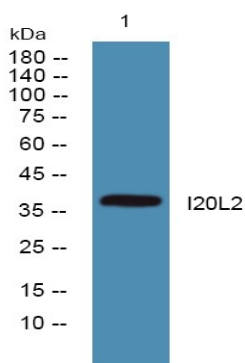
Product Name: I20L2 Rabbit Polyclonal Antibody
Catalog #: APRab12317



exoribonuclease involved in ribosome biogenesis in the processing of the 12S pre-rRNA. Displays a strong specificity for a 3'-end containing a free hydroxyl group.,similarity:Contains 1 exonuclease domain.,

Research Area

Image Data



Western blot analysis of lysates from SW480 cells, primary antibody was diluted at 1:1000, 4°over night

Note

For research use only.