

Summary

Production Name	HSFX1 Rabbit Polyclonal Antibody
Description	Rabbit Polyclonal Antibody
Host	Rabbit
Application	WB,ELISA
Reactivity	Human,Rat,Mouse

Performance

Conjugation	Unconjugated
Modification	Unmodified
Isotype	IgG
Clonality	Polyclonal
Form	Liquid
Storage	Store at 4°C short term. Aliquot and store at -20°C long term. Avoid freeze/thaw cycles.
Buffer	Liquid in PBS containing 50% glycerol, 0.5% BSA and 0.02% New type preservative N.
Purification	Affinity purification

Immunogen

Gene Name	HSFX1
Alternative Names	HSFX1; LW-1; HSF2; Heat shock transcription factor; X-linked
Gene ID	100130086/100506164
SwissProt ID	Q9UBD0.The antiserum was produced against synthesized peptide derived from human LW-1. AA range:10-59

Application

Dilution Ratio	WB 1:500 - 1:2000. ELISA: 1:10000
Molecular Weight	47kD

Background

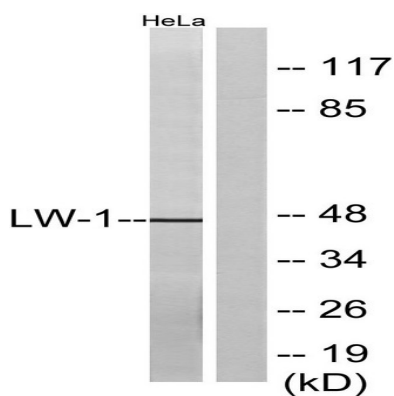
Product Name: HSFX1 Rabbit Polyclonal Antibody
Catalog #: APRab12229



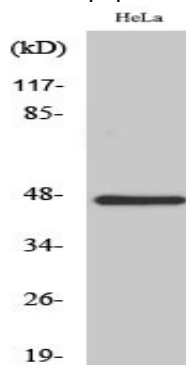
similarity:Belongs to the HSF family.,tissue specificity:Testis-specific.,similarity:Belongs to the HSF family.,tissue specificity:Testis-specific.,

Research Area

Image Data



Western blot analysis of lysates from HeLa cells, using LW-1 Antibody. The lane on the right is blocked with the synthesized peptide.



Western Blot analysis of various cells using HSFX1 Polyclonal Antibody

Note

For research use only.