

Product Name: HORMAD1 Rabbit Polyclonal Antibody
Catalog #: APRab12163



Summary

Production Name	HORMAD1 Rabbit Polyclonal Antibody
Description	Rabbit Polyclonal Antibody
Host	Rabbit
Application	WB,ELISA
Reactivity	Human,Rat,Mouse

Performance

Conjugation	Unconjugated
Modification	Unmodified
Isotype	IgG
Clonality	Polyclonal
Form	Liquid
Storage	Store at 4°C short term. Aliquot and store at -20°C long term. Avoid freeze/thaw cycles.
Buffer	Liquid in PBS containing 50% glycerol, 0.5% BSA and 0.02% New type preservative N.
Purification	Affinity purification

Immunogen

Gene Name	HORMAD1
Alternative Names	HORMAD1; NOHMA; HORMA domain-containing protein 1; Cancer/testis antigen 46; CT46; Newborn ovary HORMA protein
Gene ID	84072.0
SwissProt ID	Q86X24.The antiserum was produced against synthesized peptide derived from human HORMAD1. AA range:321-370

Application

Dilution Ratio	WB 1:500 - 1:2000. ELISA: 1:10000
Molecular Weight	45kD

Product Name: HORMAD1 Rabbit Polyclonal Antibody
Catalog #: AP Rab12163

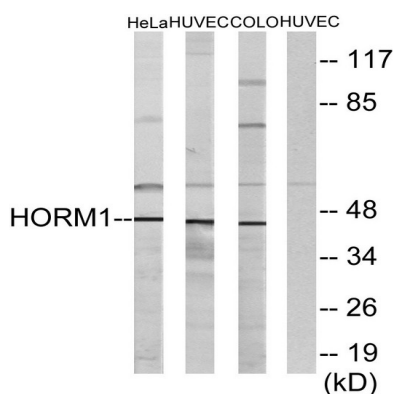


Background

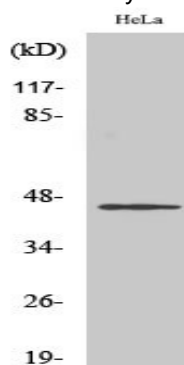
This gene encodes a HORMA domain-containing protein. HORMA domains are involved in chromatin binding and play a role in cell cycle regulation. The encoded protein may play a role in meiosis, and expression of this gene is a potential marker for cancer. A pseudogene of this gene is located on the long arm of chromosome 6. Alternatively spliced transcript variants encoding multiple isoforms have been observed for this gene. [provided by RefSeq, Dec 2010], similarity: Contains 1 HORMA domain, tissue specificity: Testis-specific. Over-expressed in carcinomas,

Research Area

Image Data



Western blot analysis of lysates from HeLa, HUVEC, and COLO cells, using HORMAD1 Antibody. The lane on the right is blocked with the synthesized peptide.



Western Blot analysis of various cells using HORMAD1 Polyclonal Antibody cells nucleus extracted by Minute TM Cytoplasmic and Nuclear Fractionation kit (SC-003, Inventbiotech, MN, USA) .

Note

For research use only.