

Product Name: hnRNP A1 Rabbit Polyclonal Antibody
Catalog #: AP Rab12136



Summary

Production Name	hnRNP A1 Rabbit Polyclonal Antibody
Description	Rabbit Polyclonal Antibody
Host	Rabbit
Application	WB,IHC,IF,ELISA
Reactivity	Human,Mouse,Rat

Performance

Conjugation	Unconjugated
Modification	Unmodified
Isotype	IgG
Clonality	Polyclonal
Form	Liquid
Storage	Store at 4°C short term. Aliquot and store at -20°C long term. Avoid freeze/thaw cycles.
Buffer	Liquid in PBS containing 50% glycerol, 0.5% BSA and 0.02% New type preservative N.
Purification	Affinity purification

Immunogen

Gene Name	HNRNPA1
Alternative Names	HNRNPA1; HNRPA1; Heterogeneous nuclear ribonucleoprotein A1; hnRNP A1; Helix-destabilizing protein; Single-strand RNA-binding protein; hnRNP core protein A1
Gene ID	3178.0
SwissProt ID	P09651.The antiserum was produced against synthesized peptide derived from human hnRNP A1. AA range:51-100

Application

Dilution Ratio	WB 1:500 - 1:2000. IHC 1:100 - 1:300. IF 1:200 - 1:1000. ELISA: 1:20000. Not yet tested in other applications.
Molecular Weight	33kD

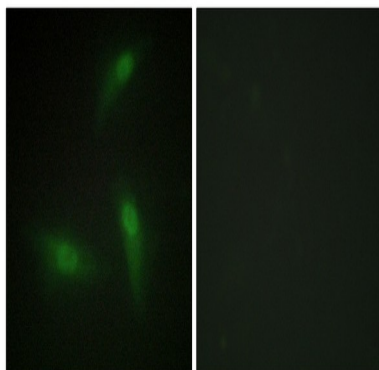
Background

This gene encodes a member of a family of ubiquitously expressed heterogeneous nuclear ribonucleoproteins (hnRNPs), which are RNA-binding proteins that associate with pre-mRNAs in the nucleus and influence pre-mRNA processing, as well as other aspects of mRNA metabolism and transport. The protein encoded by this gene is one of the most abundant core proteins of hnRNP complexes and plays a key role in the regulation of alternative splicing. Mutations in this gene have been observed in individuals with amyotrophic lateral sclerosis 20. Multiple alternatively spliced transcript variants have been found. There are numerous pseudogenes of this gene distributed throughout the genome. [provided by RefSeq, Feb 2016],function:Involved in the packaging of pre-mRNA into hnRNP particles, transport of poly(A) mRNA from the nucleus to the cytoplasm and may modulate splice site selection.,PTM:Arg-194, Arg-206 and Arg-225 are dimethylated, probably to asymmetric dimethylarginine.,similarity:Contains 2 RRM (RNA recognition motif) domains.,subcellular location:Shuttles continuously between the nucleus and the cytoplasm along with mRNA. Component of ribonucleosomes.,subunit:Identified in the spliceosome C complex, at least composed of AQR, ASCC3L1, C19orf29, CDC40, CDC5L, CRNKL1, DDX23, DDX41, DDX48, DDX5, DGCR14, DHX35, DHX38, DHX8, EFTUD2, FRG1, GPATC1, HNRNPA1, HNRNPA2B1, HNRPA3, HNRNPC, HNRPF, HNRPH1, HNRPK, HNRPM, HNRNPR, HNRNPU, KIAA1160, KIAA1604, LSM2, LSM3, MAGOH, MORG1, PABPC1, PLRG1, PNN, PPIE, PPIL1, PPIL3, PPWD1, PRPF19, PRPF4B, PRPF6, PRPF8, RALY, RBM22, RBM8A, RBMX, SART1, SF3A1, SF3A2, SF3A3, SF3B1, SF3B2, SF3B3, SFRS1, SKIV2L2, SNRPA1, SNRPB, SNRPB2, SNRPD1, SNRPD2, SNRPD3, SNRPE, SNRPF, SNRPG, SNW1, SRRM1, SRRM2, SYF2, SYNCRIP, TFIP11, THOC4, U2AF1, WDR57, XAB2 and ZCCHC8,

Research Area

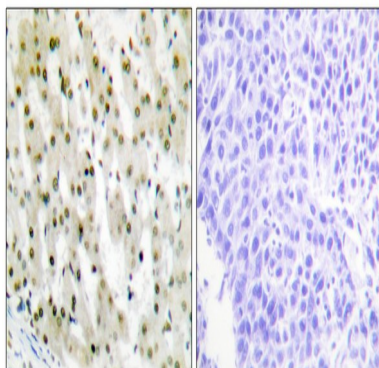
Spliceosome;

Image Data

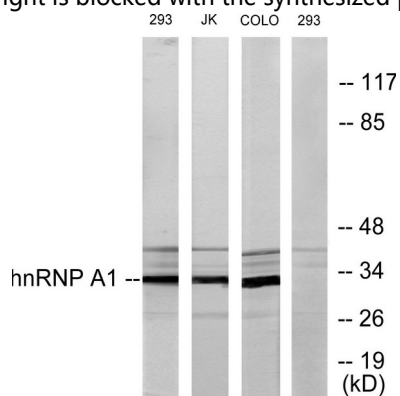


Immunofluorescence analysis of HeLa cells, using hnRNP A1 Antibody. The picture on the right is blocked with the synthesized peptide.

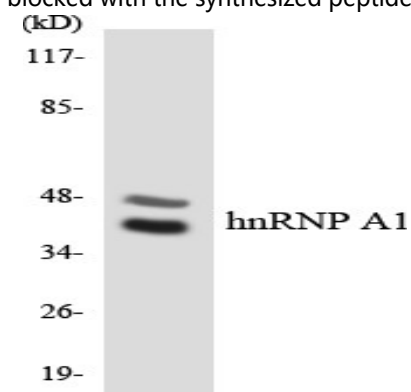
Product Name: hnRNP A1 Rabbit Polyclonal Antibody
Catalog #: APRab12136



Immunohistochemistry analysis of paraffin-embedded human liver carcinoma tissue, using hnRNP A1 Antibody. The picture on the right is blocked with the synthesized peptide.

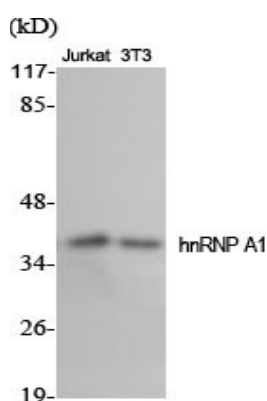


Western blot analysis of lysates from 293, Jurkat, and COLO205 cells, using hnRNP A1 Antibody. The lane on the right is blocked with the synthesized peptide.

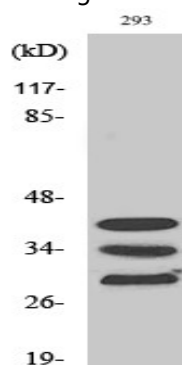


Western blot analysis of the lysates from RAW264.7 cells using hnRNP A1 antibody.

Product Name: hnRNP A1 Rabbit Polyclonal Antibody
Catalog #: APRab12136



Western Blot analysis of various cells using hnRNP A1 Polyclonal Antibody diluted at 1: 2000



Western Blot analysis of COLO205 cells using hnRNP A1 Polyclonal Antibody diluted at 1: 2000

Note

For research use only.