

Summary

Production Name	HIPK1 Rabbit Polyclonal Antibody
Description	Rabbit Polyclonal Antibody
Host	Rabbit
Application	WB
Reactivity	Human,Mouse,Rat

Performance

Conjugation	Unconjugated
Modification	Unmodified
Isotype	IgG
Clonality	Polyclonal
Form	Liquid
Storage	Store at 4°C short term. Aliquot and store at -20°C long term. Avoid freeze/thaw cycles.
Buffer	Liquid in PBS containing 50% glycerol, and 0.02% New type preservative N.
Purification	Affinity purification

Immunogen

Gene Name	HIPK1 KIAA0630 MYAK NBAK2
Alternative Names	
Gene ID	204851.0
SwissProt ID	Q86Z02.Synthesized peptide derived from human protein . at AA range: 290-370

Application

Dilution Ratio	WB 1:500-2000 ELISA 1:5000-20000
Molecular Weight	133kD

Background

homeodomain interacting protein kinase 1(HIPK1) Homo sapiens The protein encoded by this gene belongs to the Ser/Thr family of protein kinases and HIPK subfamily. It phosphorylates homeodomain transcription factors and may also

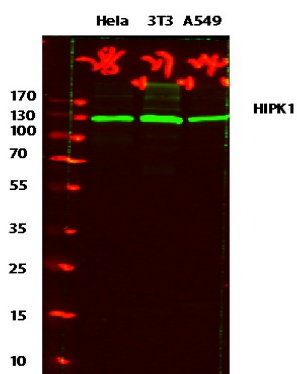
Product Name: HIPK1 Rabbit Polyclonal Antibody
Catalog #: APRab12031



function as a co-repressor for homeodomain transcription factors. Alternative splicing results in four transcript variants encoding four distinct isoforms. [provided by RefSeq, Jul 2008],catalytic activity:ATP + a protein = ADP + a phosphoprotein.,function:May play a role as a corepressor for homeodomain transcription factors. Phosphorylates DAXX in response to stress, and mediates its translocation from the nucleus to the cytoplasm. May be involved in malignant squamous cell tumor formation.,PTM:Autophosphorylated. Phosphorylated and activated by JNK1.,similarity:Belongs to the protein kinase superfamily.,similarity:Belongs to the protein kinase superfamily. CMGC Ser/Thr protein kinase family. HIPK subfamily.,similarity:Contains 1 protein kinase domain.,subcellular location:Predominantly nuclear.,subunit:Interacts with Nkx1-2 and Nkx2-5 (By similarity). Interacts with DAXX and TP53.,tissue specificity:Ubiquitously expressed with highest levels in skeletal muscle and heart. Overexpressed in breast cancer cell lines.,

Research Area

Image Data



Western blot analysis of various lysates, primary antibody was diluted at 1:1000, 4° over night, secondary antibody was diluted at 1:10000, 37° 1 hour.

Note

For research use only.