

Product Name: HIBADH Rabbit Polyclonal Antibody
Catalog #: APRab12013



Summary

Production Name	HIBADH Rabbit Polyclonal Antibody
Description	Rabbit Polyclonal Antibody
Host	Rabbit
Application	IHC,ELISA
Reactivity	Human,Mouse,Rat

Performance

Conjugation	Unconjugated
Modification	Unmodified
Isotype	IgG
Clonality	Polyclonal
Form	Liquid
Storage	Store at 4°C short term. Aliquot and store at -20°C long term. Avoid freeze/thaw cycles.
Buffer	Liquid in PBS containing 50% glycerol, 0.5% BSA and 0.02% New type preservative N.
Purification	Affinity purification

Immunogen

Gene Name	HIBADH
Alternative Names	HIBADH; 3-hydroxyisobutyrate dehydrogenase; mitochondrial; HIBADH
Gene ID	11112.0
SwissProt ID	P31937.The antiserum was produced against synthesized peptide derived from human HIBADH. AA range:281-330

Application

Dilution Ratio	IHC 1:100-1:300 ELISA: 1:10000
Molecular Weight	

Background

This gene encodes a mitochondrial 3-hydroxyisobutyrate dehydrogenase enzyme. The encoded protein plays a critical role

Product Name: HIBADH Rabbit Polyclonal Antibody
Catalog #: APRab12013

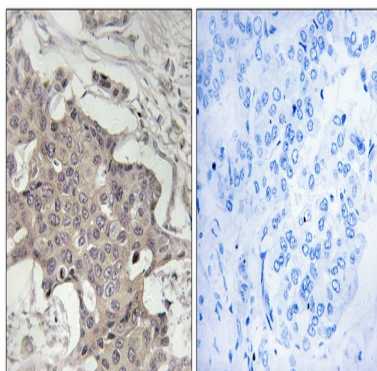


in the catabolism of L-valine by catalyzing the oxidation of 3-hydroxyisobutyrate to methylmalonate semialdehyde.
[provided by RefSeq, Nov 2011],catalytic activity:3-hydroxy-2-methylpropanoate + NAD(+) = 2-methyl-3-oxopropanoate + NADH.,similarity:Belongs to the 3-hydroxyisobutyrate dehydrogenase family.,subunit:Homodimer.,

Research Area

Valine; leucine and isoleucine degradation;

Image Data



Immunohistochemistry analysis of paraffin-embedded human breast carcinoma tissue, using HIBADH Antibody. The picture on the right is blocked with the synthesized peptide.

Note

For research use only.