

## Summary

<b>Production Name</b>	HGK Rabbit Polyclonal Antibody
<b>Description</b>	Rabbit Polyclonal Antibody
<b>Host</b>	Rabbit
<b>Application</b>	IF, WB, ELISA
<b>Reactivity</b>	Human, Mouse

## Performance

<b>Conjugation</b>	Unconjugated
<b>Modification</b>	Unmodified
<b>Isotype</b>	IgG
<b>Clonality</b>	Polyclonal
<b>Form</b>	Liquid
<b>Storage</b>	Store at 4°C short term. Aliquot and store at -20°C long term. Avoid freeze/thaw cycles.
<b>Buffer</b>	Liquid in PBS containing 50% glycerol, 0.5% BSA and 0.02% New type preservative N.
<b>Purification</b>	Affinity purification

## Immunogen

<b>Gene Name</b>	MAP4K4 MAP4K4; HGK; KIAA0687; NIK; Mitogen-activated protein kinase kinase kinase 4;
<b>Alternative Names</b>	HPK/GCK-like kinase HGK; MAPK/ERK kinase kinase kinase 4; MEK kinase kinase 4; MEKKK 4; Nck-interacting kinase
<b>Gene ID</b>	9448.0
<b>SwissProt ID</b>	O95819. The antiserum was produced against synthesized peptide derived from human MEKKK 4. AA range: 406-455

## Application

<b>Dilution Ratio</b>	WB 1:500 - 1:2000. IF 1:200 - 1:1000. ELISA: 1:40000. Not yet tested in other applications.
-----------------------	---

**Product Name: HGK Rabbit Polyclonal Antibody**  
**Catalog #: APRab12010**



---

**Molecular Weight**      142kD

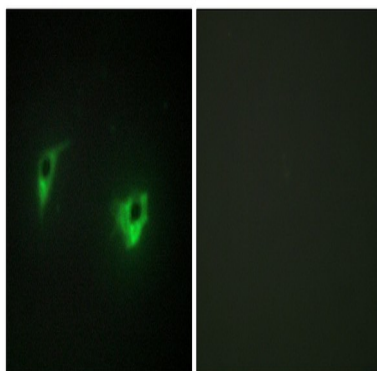
## Background

mitogen-activated protein kinase kinase kinase 4(MAP4K4) Homo sapiens The protein encoded by this gene is a member of the serine/threonine protein kinase family. This kinase has been shown to specifically activate MAPK8/JNK. The activation of MAPK8 by this kinase is found to be inhibited by the dominant-negative mutants of MAP3K7/TAK1, MAP2K4/MKK4, and MAP2K7/MKK7, which suggests that this kinase may function through the MAP3K7-MAP2K4-MAP2K7 kinase cascade, and mediate the TNF-alpha signaling pathway. Alternatively spliced transcript variants encoding different isoforms have been identified. [provided by RefSeq, Jul 2008],catalytic activity:ATP + a protein = ADP + a phosphoprotein.,cofactor:Magnesium.,function:Serine/threonine kinase that may play a role in the response to environmental stress and cytokines such as TNF-alpha. Appears to act upstream of the JUN N-terminal pathway.,PTM:Phosphorylated upon DNA damage, probably by ATM or ATR.,similarity:Belongs to the protein kinase superfamily.,similarity:Belongs to the protein kinase superfamily. STE Ser/Thr protein kinase family. STE20 subfamily.,similarity:Contains 1 CNH domain.,similarity:Contains 1 protein kinase domain.,subunit:Interacts with the SH3 domain of the adapter proteins Nck (By similarity). Binds, via its CNH regulatory domain, to the N-terminal region of SPG3A.,tissue specificity:Appears to be ubiquitous, expressed in all tissue types examined. Isoform 5 appears to be more abundant in the brain, isoform 4 is predominant in the liver, skeletal muscle and placenta.,

## Research Area

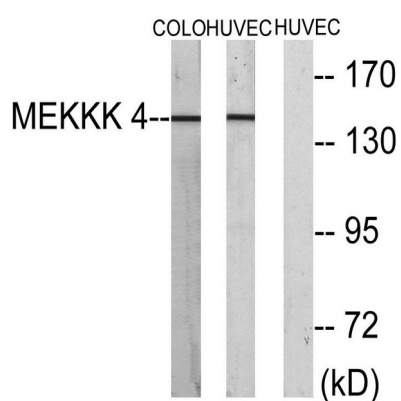
MAPK\_ERK\_Growth;MAPK\_G\_Protein;

## Image Data

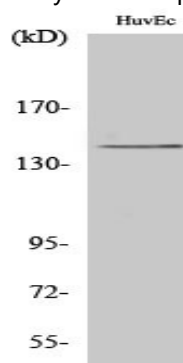


Immunofluorescence analysis of A549 cells, using MEKK4 Antibody. The picture on the right is blocked with the synthesized peptide.

**Product Name: HGK Rabbit Polyclonal Antibody**  
**Catalog #: APRab12010**



Western blot analysis of lysates from HUVEC and COLO cells, using MEKKK 4 Antibody. The lane on the right is blocked with the synthesized peptide.



Western Blot analysis of various cells using HGK Polyclonal Antibody

## Note

For research use only.