

Product Name: HDGF Rabbit Polyclonal Antibody
Catalog #: APRab11957



Summary

Production Name	HDGF Rabbit Polyclonal Antibody
Description	Rabbit Polyclonal Antibody
Host	Rabbit
Application	IHC,ELISA
Reactivity	Human,Rat,Mouse

Performance

Conjugation	Unconjugated
Modification	Unmodified
Isotype	IgG
Clonality	Polyclonal
Form	Liquid
Storage	Store at 4°C short term. Aliquot and store at -20°C long term. Avoid freeze/thaw cycles.
Buffer	Liquid in PBS containing 50% glycerol, 0.5% BSA and 0.02% New type preservative N.
Purification	Affinity purification

Immunogen

Gene Name	HDGF HMG1L2
Alternative Names	Hepatoma-derived growth factor (HDGF;High mobility group protein 1-like 2;HMG-1L2)
Gene ID	3068.0
SwissProt ID	P51858.Synthetic peptide from human protein at AA range: 141-190

Application

Dilution Ratio	IHC 1:50-200 ELISA 1:10000-20000
Molecular Weight	

Background

This gene encodes a member of the hepatoma-derived growth factor family. The encoded protein has mitogenic and DNA-

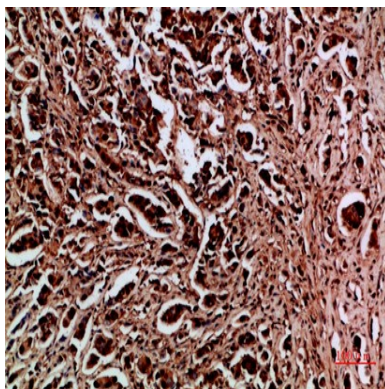
Product Name: HDGF Rabbit Polyclonal Antibody
Catalog #: APRab11957



binding activity and may play a role in cellular proliferation and differentiation. High levels of expression of this gene enhance the growth of many tumors. This gene was thought initially to be located on chromosome X; however, that location has been determined to correspond to a related pseudogene. Alternatively spliced transcript variants encoding distinct isoforms have been described. [provided by RefSeq, Jan 2016],domain:The PWWP domain harbors the heparin-binding sites and is responsible for DNA-binding, while the C-terminal region is essentially unstructured.,function:Heparin-binding protein, with mitogenic activity for fibroblasts. Acts as a transcriptional repressor.,PTM:Sumoylated by SUMO1. Sumoylation prevents binding to chromatin.,similarity:Belongs to the HDGF family.,similarity:Contains 1 PWWP domain.,subunit:Monomer, and domain-swapped homodimer.,tissue specificity:Ubiquitous.,

Research Area

Image Data



Immunohistochemical analysis of paraffin-embedded human-breast-cancer, antibody was diluted at 1:200

Note

For research use only.