

**Product Name: HDC Rabbit Polyclonal Antibody**  
**Catalog #: APRab11956**



## Summary

<b>Production Name</b>	HDC Rabbit Polyclonal Antibody
<b>Description</b>	Rabbit Polyclonal Antibody
<b>Host</b>	Rabbit
<b>Application</b>	WB,IHC,IF,ELISA
<b>Reactivity</b>	Human,Mouse,Rat

## Performance

<b>Conjugation</b>	Unconjugated
<b>Modification</b>	Unmodified
<b>Isotype</b>	IgG
<b>Clonality</b>	Polyclonal
<b>Form</b>	Liquid
<b>Storage</b>	Store at 4°C short term. Aliquot and store at -20°C long term. Avoid freeze/thaw cycles.
<b>Buffer</b>	Liquid in PBS containing 50% glycerol, 0.5% BSA and 0.02% New type preservative N.
<b>Purification</b>	Affinity purification

## Immunogen

<b>Gene Name</b>	HDC
<b>Alternative Names</b>	HDC; Histidine decarboxylase; HDC
<b>Gene ID</b>	3067.0
<b>SwissProt ID</b>	P19113.The antiserum was produced against synthesized peptide derived from the Internal region of human HDC. AA range:201-250

## Application

<b>Dilution Ratio</b>	WB 1:500 - 1:2000. IHC-p: 1:100-300 ELISA: 1:20000.. IF 1:50-200
<b>Molecular Weight</b>	72kD

## Background

**Product Name: HDC Rabbit Polyclonal Antibody**  
**Catalog #: APRab11956**

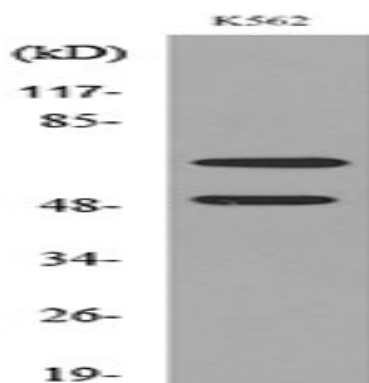


This gene encodes a member of the group II decarboxylase family and forms a homodimer that converts L-histidine to histamine in a pyridoxal phosphate dependent manner. Histamine regulates several physiologic processes, including neurotransmission, gastric acid secretion, inflammation, and smooth muscle tone.[provided by RefSeq, Aug 2010], catalytic activity: L-histidine = histamine + CO<sub>2</sub>., cofactor: Pyridoxal phosphate., pathway: Amine and polyamine biosynthesis; histamine biosynthesis; histamine from L-histidine: step 1/1., similarity: Belongs to the group II decarboxylase family., subunit: Homodimer.,

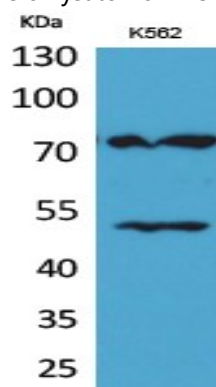
## Research Area

Histidine metabolism;

## Image Data

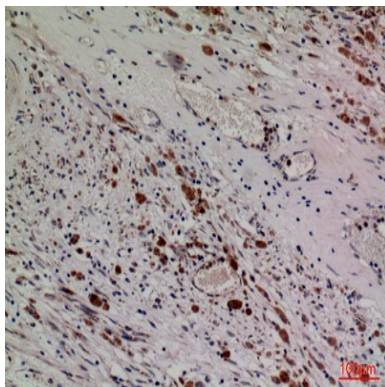


Western blot analysis of lysate from K562 cells, using HDC Antibody.

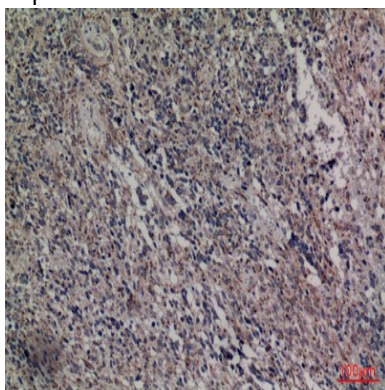


Western Blot analysis of K562 cells using HDC Polyclonal Antibody.. Secondary antibody was diluted at 1:20000

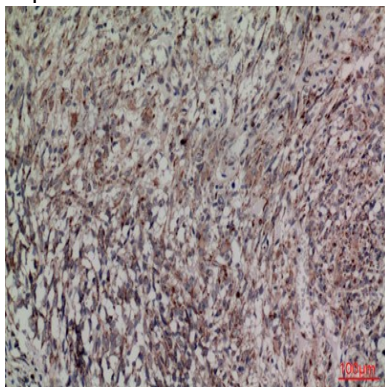
**Product Name: HDC Rabbit Polyclonal Antibody**  
**Catalog #: APRab11956**



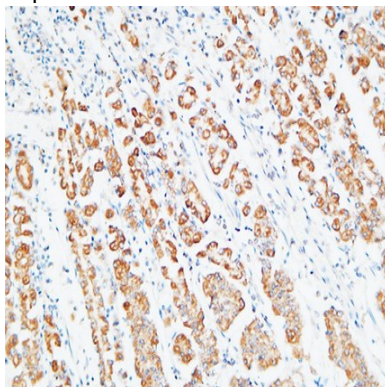
Immunohistochemical analysis of paraffin-embedded human-brain, antibody was diluted at 1:100



Immunohistochemical analysis of paraffin-embedded human-brain, antibody was diluted at 1:100



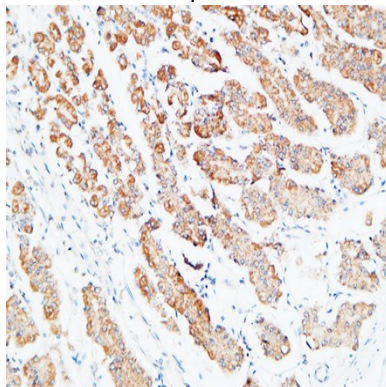
Immunohistochemical analysis of paraffin-embedded human-brain, antibody was diluted at 1:100



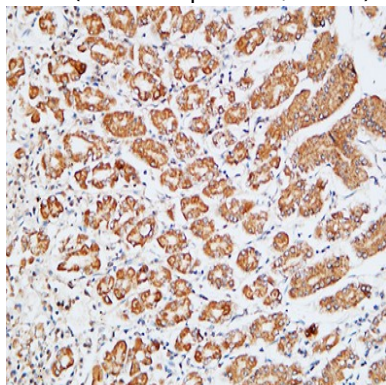
**Product Name: HDC Rabbit Polyclonal Antibody**  
**Catalog #: APRab11956**



Immunohistochemical analysis of paraffin-embedded Human stomach. 1, Antibody was diluted at 1:200 (4°,overnight) . 2, High-pressure and temperature EDTA, pH8.0 was used for antigen retrieval. 3,Secondary antibody was diluted at 1:200 (room temperature, 30min) .



Immunohistochemical analysis of paraffin-embedded Human stomach. 1, Antibody was diluted at 1:200 (4°,overnight) . 2, High-pressure and temperature EDTA, pH8.0 was used for antigen retrieval. 3,Secondary antibody was diluted at 1:200 (room temperature, 30min) .



Immunohistochemical analysis of paraffin-embedded Human stomach. 1, Antibody was diluted at 1:200 (4°,overnight) . 2, High-pressure and temperature EDTA, pH8.0 was used for antigen retrieval. 3,Secondary antibody was diluted at 1:200 (room temperature, 30min) .

**Note**

For research use only.