

Product Name: GTPBP5 Rabbit Polyclonal Antibody
Catalog #: AP Rab11849



Summary

Production Name	GTPBP5 Rabbit Polyclonal Antibody
Description	Rabbit Polyclonal Antibody
Host	Rabbit
Application	IHC, ELISA
Reactivity	Human, Mouse, Rat

Performance

Conjugation	Unconjugated
Modification	Unmodified
Isotype	IgG
Clonality	Polyclonal
Form	Liquid
Storage	Store at 4°C short term. Aliquot and store at -20°C long term. Avoid freeze/thaw cycles.
Buffer	Liquid in PBS containing 50% glycerol, 0.5% BSA and 0.02% New type preservative N.
Purification	Affinity purification

Immunogen

Gene Name	GTPBP5
Alternative Names	GTPBP5; OBGH1; GTP-binding protein 5; Protein obg homolog 1; ObgH1
Gene ID	26164.0
SwissProt ID	Q9H4K7. The antiserum was produced against synthesized peptide derived from human GTPBP5. AA range: 71-120

Application

Dilution Ratio	IHC 1:100-1:300 ELISA: 1:20000
Molecular Weight	

Background

Small G proteins, such as GTPBP5, act as molecular switches that play crucial roles in the regulation of fundamental cellular

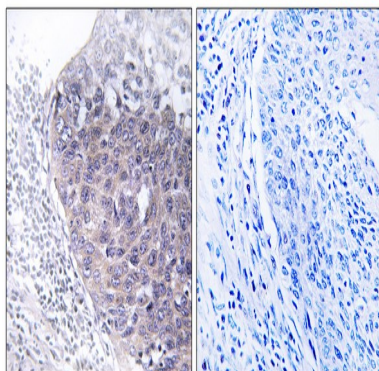
Product Name: GTPBP5 Rabbit Polyclonal Antibody
Catalog #: APRab11849



processes such as protein synthesis, nuclear transport, membrane trafficking, and signal transduction (Hirano et al., 2006 [PubMed 17054726]).[supplied by OMIM, Mar 2008],function:Involved in the ribosome maturation process. Plays a role of GTPase in vitro. When missing, mitochondria elongation and abnormal nuclear morphology are observed.,sequence caution:Translated as Gln.,similarity:Belongs to the GTP1/OBG family.,

Research Area

Image Data



Immunohistochemistry analysis of paraffin-embedded human cervix carcinoma tissue, using GTPBP5 Antibody. The picture on the right is blocked with the synthesized peptide.

Note

For research use only.