

**Product Name: GRP78 BiP Rabbit Polyclonal Antibody**  
**Catalog #: APRab11795**



## Summary

|                        |                                      |
|------------------------|--------------------------------------|
| <b>Production Name</b> | GRP78 BiP Rabbit Polyclonal Antibody |
| <b>Description</b>     | Rabbit Polyclonal Antibody           |
| <b>Host</b>            | Rabbit                               |
| <b>Application</b>     | WB,IHC,ELISA                         |
| <b>Reactivity</b>      | Human,Mouse,Rat,Fish                 |

## Performance

|                     |  |
|---------------------|--|
| <b>Conjugation</b>  | Unconjugated   |
| <b>Modification</b> | Unmodified   |
| <b>Isotype</b>      | IgG  |
| <b>Clonality</b>    | Polyclonal   |
| <b>Form</b>         | Liquid   |
| <b>Storage</b>      | Store at 4°C short term. Aliquot and store at -20°C long term. Avoid freeze/thaw cycles. |
| <b>Buffer</b>       | Liquid in PBS containing 50% glycerol, 0.5% BSA and 0.02% New type preservative N.       |
| <b>Purification</b> | Affinity purification  |

## Immunogen

|                          |   |
|--------------------------|---|
| <b>Gene Name</b>         | HSPA5 GRP78   |
| <b>Alternative Names</b> | 78 kDa glucose-regulated protein (GRP-78) (Endoplasmic reticulum lumenal Ca(2+)-binding protein grp78) (Heat shock 70 kDa protein 5) (Immunoglobulin heavy chain-binding protein) (BiP) |
| <b>Gene ID</b>           | 3309.0  |
| <b>SwissProt ID</b>      | P11021.Synthetic peptide from human protein at AA range: 505-570  |

## Application

|                         |  |
|-------------------------|--|
| <b>Dilution Ratio</b>   | WB 1:500 - 1:2000.IHC:f:1:50-300. ELISA 1:10000-20000. |
| <b>Molecular Weight</b> | 78kD   |

**Product Name: GRP78 BiP Rabbit Polyclonal Antibody**  
**Catalog #: AP Rab11795**



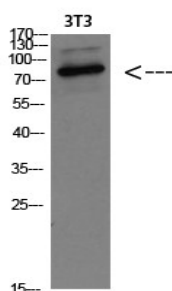
## Background

The protein encoded by this gene is a member of the heat shock protein 70 (HSP70) family. It is localized in the lumen of the endoplasmic reticulum (ER), and is involved in the folding and assembly of proteins in the ER. As this protein interacts with many ER proteins, it may play a key role in monitoring protein transport through the cell.[provided by RefSeq, Sep 2010],disease:Autoantigen in rheumatoid arthritis [MIM:180300].,function:Probably plays a role in facilitating the assembly of multimeric protein complexes inside the ER.,similarity:Belongs to the heat shock protein 70 family.,subcellular location:Identified by mass spectrometry in melanosome fractions from stage I to stage IV.,subunit:Interacts with DNAJC1 (via J domain) (By similarity). Component of an EIF2 complex at least composed of CUGBP1, CALR, CALR3, EIF2S1, EIF2S2, HSP90B1 and HSPA5. Part a large chaperone multiprotein complex comprising CABP1, DNAJB11, HSP90B1, HSPA5, HYOU, PDIA2, PDIA4, PPIB, SDF2L1, UGT1A1 and very small amounts of ERP29, but not, or at very low levels, CALR nor CANX. Interacts with TMEM132A.,

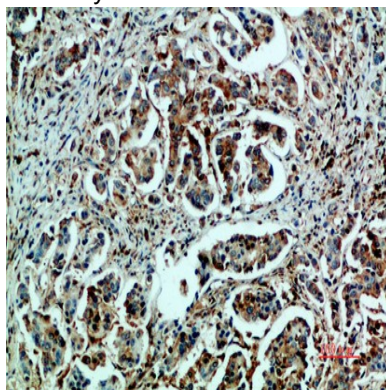
## Research Area

Antigen processing and presentation;Prion diseases;

## Image Data

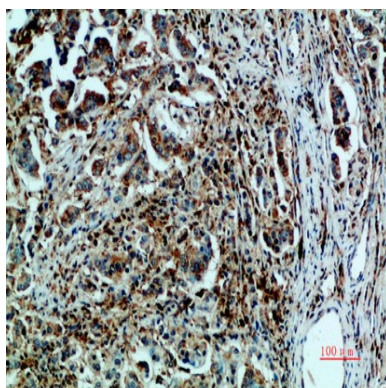


Western blot analysis of 3T3 Cell Lysate, antibody was diluted at 1:1000. Secondary antibody was diluted at 1:20000

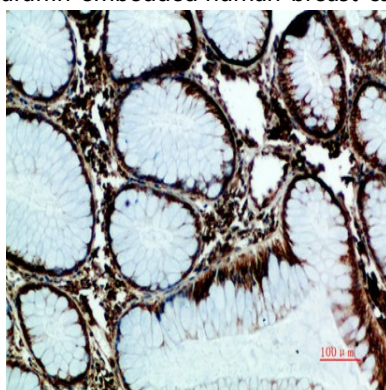


Immunohistochemical analysis of paraffin-embedded human-breast-cancer, antibody was diluted at 1:200

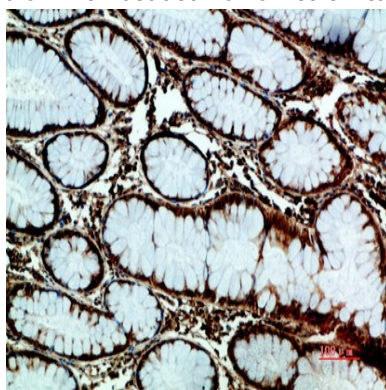
**Product Name: GRP78 BiP Rabbit Polyclonal Antibody**  
**Catalog #: APRab11795**



Immunohistochemical analysis of paraffin-embedded human-breast-cancer, antibody was diluted at 1:200



Immunohistochemical analysis of paraffin-embedded human-colon-cancer, antibody was diluted at 1:200



Immunohistochemical analysis of paraffin-embedded human-colon-cancer, antibody was diluted at 1:200

## **Note**

For research use only.