

Product Name: GRK 5 Rabbit Polyclonal Antibody
Catalog #: APRab11776



Summary

Production Name	GRK 5 Rabbit Polyclonal Antibody
Description	Rabbit Polyclonal Antibody
Host	Rabbit
Application	WB,ELISA
Reactivity	Human,Mouse,Rat

Performance

Conjugation	Unconjugated
Modification	Unmodified
Isotype	IgG
Clonality	Polyclonal
Form	Liquid
Storage	Store at 4°C short term. Aliquot and store at -20°C long term. Avoid freeze/thaw cycles.
Buffer	Liquid in PBS containing 50% glycerol, 0.5% BSA and 0.02% New type preservative N.
Purification	Affinity purification

Immunogen

Gene Name	GRK5
Alternative Names	GRK5; GPRK5; G protein-coupled receptor kinase 5; G protein-coupled receptor kinase GRK5
Gene ID	2869.0
SwissProt ID	P34947.The antiserum was produced against synthesized peptide derived from human GRK5. AA range:351-400

Application

Dilution Ratio	WB 1:500 - 1:2000. ELISA: 1:10000..
Molecular Weight	68kD

Product Name: GRK 5 Rabbit Polyclonal Antibody
Catalog #: AP Rab11776



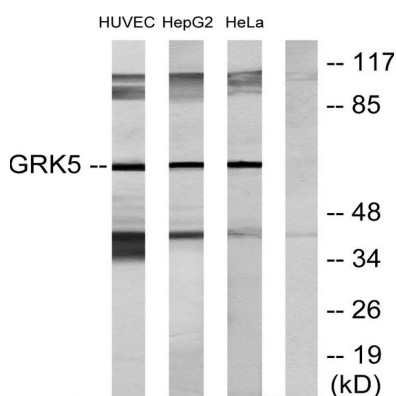
Background

This gene encodes a member of the guanine nucleotide-binding protein (G protein)-coupled receptor kinase subfamily of the Ser/Thr protein kinase family. The protein phosphorylates the activated forms of G protein-coupled receptors thus initiating their deactivation. It has also been shown to play a role in regulating the motility of polymorphonuclear leukocytes (PMNs). [provided by RefSeq, Jul 2008], catalytic activity: ATP + [G-protein-coupled receptor] = ADP + [G-protein-coupled receptor] phosphate., function: Specifically phosphorylates the activated forms of G protein-coupled receptors., similarity: Belongs to the protein kinase superfamily. AGC Ser/Thr protein kinase family. GPRK subfamily., similarity: Contains 1 AGC-kinase C-terminal domain., similarity: Contains 1 protein kinase domain., similarity: Contains 1 RGS domain., tissue specificity: Highest levels in heart, placenta, lung > skeletal muscle > brain, liver, pancreas > kidney.,

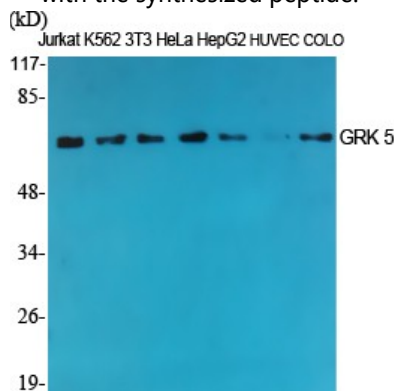
Research Area

Chemokine; Endocytosis;

Image Data

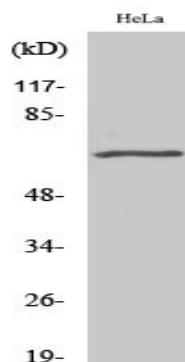


Western blot analysis of lysates from HeLa, HepG2, and HUVEC cells, using GRK5 Antibody. The lane on the right is blocked with the synthesized peptide.



Western Blot analysis of various cells using GRK 5 Polyclonal Antibody

Product Name: GRK 5 Rabbit Polyclonal Antibody
Catalog #: APRab11776



Western Blot analysis of COLO205 cells using GRK 5 Polyclonal Antibody

Note

For research use only.