

Summary

Production Name	GRK 3 Rabbit Polyclonal Antibody
Description	Rabbit Polyclonal Antibody
Host	Rabbit
Application	WB,ELISA
Reactivity	Human,Mouse,Rat

Performance

Conjugation	Unconjugated
Modification	Unmodified
Isotype	IgG
Clonality	Polyclonal
Form	Liquid
Storage	Store at 4°C short term. Aliquot and store at -20°C long term. Avoid freeze/thaw cycles.
Buffer	Liquid in PBS containing 50% glycerol, 0.5% BSA and 0.02% New type preservative N.
Purification	Affinity purification

Immunogen

Gene Name	ADRBK2
Alternative Names	ADRBK2; BARK2; GRK3; Beta-adrenergic receptor kinase 2; Beta-ARK-2; G-protein-coupled receptor kinase 3
Gene ID	157.0
SwissProt ID	P35626.The antiserum was produced against synthesized peptide derived from human GRK3. AA range:361-410

Application

Dilution Ratio	WB 1:500 - 1:2000. ELISA: 1:20000..
Molecular Weight	80kD

Product Name: GRK 3 Rabbit Polyclonal Antibody
Catalog #: AP Rab11774



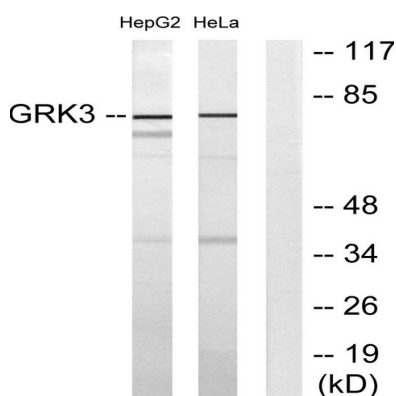
Background

The beta-adrenergic receptor kinase specifically phosphorylates the agonist-occupied form of the beta-adrenergic and related G protein-coupled receptors. Overall, the beta adrenergic receptor kinase 2 has 85% amino acid similarity with beta adrenergic receptor kinase 1, with the protein kinase catalytic domain having 95% similarity. These data suggest the existence of a family of receptor kinases which may serve broadly to regulate receptor function. [provided by RefSeq, Jul 2008],catalytic activity:ATP + [beta-adrenergic receptor] = ADP + [beta-adrenergic receptor] phosphate.,function:Specifically phosphorylates the agonist-occupied form of the beta-adrenergic and closely related receptors.,similarity:Belongs to the protein kinase superfamily.,similarity:Belongs to the protein kinase superfamily. AGC Ser/Thr protein kinase family. GPRK subfamily.,similarity:Contains 1 AGC-kinase C-terminal domain.,similarity:Contains 1 PH domain.,similarity:Contains 1 protein kinase domain.,similarity:Contains 1 RGS domain.,

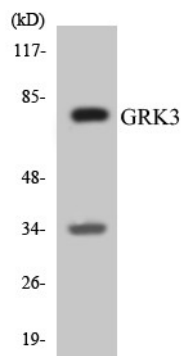
Research Area

Chemokine;Endocytosis;Olfactory transduction;

Image Data

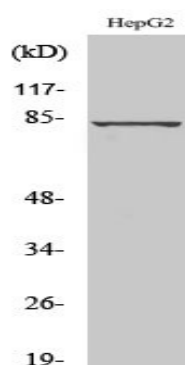


Western blot analysis of lysates from HepG2 and HeLa cells, using GRK3 Antibody. The lane on the right is blocked with the synthesized peptide.



Western blot analysis of the lysates from K562 cells using GRK3 antibody.

Product Name: GRK 3 Rabbit Polyclonal Antibody
Catalog #: APRab11774



Western Blot analysis of various cells using GRK 3 Polyclonal Antibody diluted at 1: 500

Note

For research use only.