

Product Name: GRIN3 Rabbit Polyclonal Antibody
Catalog #: APRab11768



Summary

Production Name	GRIN3 Rabbit Polyclonal Antibody
Description	Rabbit Polyclonal Antibody
Host	Rabbit
Application	IHC,ELISA
Reactivity	Human,Rat,Mouse

Performance

Conjugation	Unconjugated
Modification	Unmodified
Isotype	IgG
Clonality	Polyclonal
Form	Liquid
Storage	Store at 4°C short term. Aliquot and store at -20°C long term. Avoid freeze/thaw cycles.
Buffer	Liquid in PBS containing 50% glycerol, 0.5% BSA and 0.02% New type preservative N.
Purification	Affinity purification

Immunogen

Gene Name	GPRIN3
Alternative Names	GPRIN3; KIAA2027; G protein-regulated inducer of neurite outgrowth 3; GRIN3
Gene ID	285513.0
SwissProt ID	Q6ZVF9.The antiserum was produced against synthesized peptide derived from human GPRIN3. AA range:131-180

Application

Dilution Ratio	IHC 1:100-1:300 ELISA: 1:40000
Molecular Weight	

Background

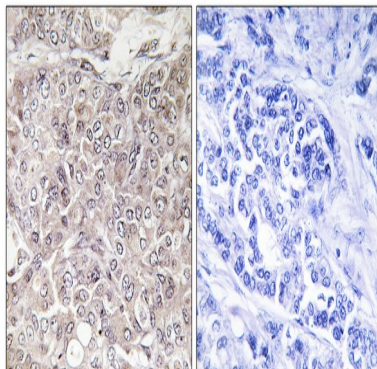
function:May be involved in neurite outgrowth.,function:May be involved in neurite outgrowth.,

Product Name: GRIN3 Rabbit Polyclonal Antibody
Catalog #: APRab11768



Research Area

Image Data



Immunohistochemistry analysis of paraffin-embedded human breast carcinoma, using GPRIN3 Antibody. The picture on the right is blocked with the synthesized peptide.

Note

For research use only.