

Product Name: GRB7 Rabbit Polyclonal Antibody
Catalog #: AP Rab11754



Summary

Production Name	GRB7 Rabbit Polyclonal Antibody
Description	Rabbit Polyclonal Antibody
Host	Rabbit
Application	IHC, ELISA
Reactivity	Human, Mouse, Rat

Performance

Conjugation	Unconjugated
Modification	Unmodified
Isotype	IgG
Clonality	Polyclonal
Form	Liquid
Storage	Store at 4°C short term. Aliquot and store at -20°C long term. Avoid freeze/thaw cycles.
Buffer	Liquid in PBS containing 50% glycerol, 0.5% BSA and 0.02% New type preservative N.
Purification	Affinity purification

Immunogen

Gene Name	GRB7
Alternative Names	Growth factor receptor-bound protein 7 (B47; Epidermal growth factor receptor GRB-7; GRB7 adapter protein)
Gene ID	2886.0
SwissProt ID	Q14451. Synthetic peptide from human protein at AA range: 30-100

Application

Dilution Ratio	IHC 1:50-200 ELISA 1:10000-20000
Molecular Weight	

Background

The product of this gene belongs to a small family of adapter proteins that are known to interact with a number of receptor

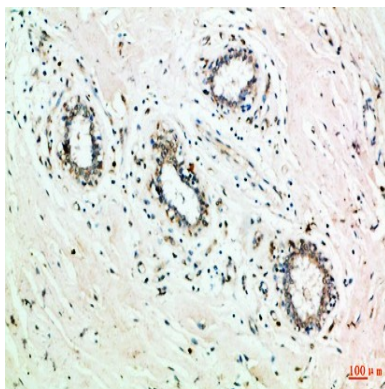
Product Name: GRB7 Rabbit Polyclonal Antibody
Catalog #: AP Rab11754



tyrosine kinases and signaling molecules. This gene encodes a growth factor receptor-binding protein that interacts with epidermal growth factor receptor (EGFR) and ephrin receptors. The protein plays a role in the integrin signaling pathway and cell migration by binding with focal adhesion kinase (FAK). Several transcript variants encoding two different isoforms have been found for this gene. [provided by RefSeq, Jun 2011], alternative products: At least 2 isoforms are produced, function: Interacts with the cytoplasmic domain of the epidermal growth factor receptor which is then inhibited. The interaction is mediated by the SH2 domain. Also binds to ERBB2., PTM: Phosphorylated on tyrosine residues., similarity: Belongs to the GRB7/10/14 family., similarity: Contains 1 PH domain., similarity: Contains 1 Ras-associating domain., similarity: Contains 1 SH2 domain., subunit: Interacts with RND1.,

Research Area

Image Data



Immunohistochemical analysis of paraffin-embedded Human-breast, antibody was diluted at 1:100

Note

For research use only.