

## Summary

<b>Production Name</b>	GRB10 Rabbit Polyclonal Antibody
<b>Description</b>	Rabbit Polyclonal Antibody
<b>Host</b>	Rabbit
<b>Application</b>	IF,IHC,WB,ELISA
<b>Reactivity</b>	Human,Rat,Mouse

## Performance

<b>Conjugation</b>	Unconjugated
<b>Modification</b>	Unmodified
<b>Isotype</b>	IgG
<b>Clonality</b>	Polyclonal
<b>Form</b>	Liquid
<b>Storage</b>	Store at 4°C short term. Aliquot and store at -20°C long term. Avoid freeze/thaw cycles.
<b>Buffer</b>	Liquid in PBS containing 50% glycerol, 0.5% BSA and 0.02% New type preservative N.
<b>Purification</b>	Affinity purification

## Immunogen

<b>Gene Name</b>	GRB10
<b>Alternative Names</b>	GRB10; GRBIR; KIAA0207; Growth factor receptor-bound protein 10; GRB10 adapter protein; Insulin receptor-binding protein Grb-IR
<b>Gene ID</b>	2887.0
<b>SwissProt ID</b>	Q13322.The antiserum was produced against synthesized peptide derived from human GRB10. AA range:33-82

## Application

<b>Dilution Ratio</b>	WB 1:500 - 1:2000. IHC 1:100 - 1:300. IF 1:200 - 1:1000. ELISA: 1:5000. Not yet tested in other applications.
<b>Molecular Weight</b>	67kD

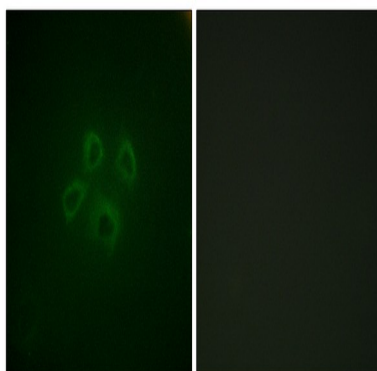
## Background

The product of this gene belongs to a small family of adapter proteins that are known to interact with a number of receptor tyrosine kinases and signaling molecules. This gene encodes a growth factor receptor-binding protein that interacts with insulin receptors and insulin-like growth-factor receptors. Overexpression of some isoforms of the encoded protein inhibits tyrosine kinase activity and results in growth suppression. This gene is imprinted in a highly isoform- and tissue-specific manner, with expression observed from the paternal allele in the brain, and from the maternal allele in the placental trophoblasts. Alternatively spliced transcript variants encoding different isoforms have been identified. [provided by RefSeq, Oct 2010], alternative products: Additional isoforms seem to exist, function: Plays a functional role in insulin and IGF-I signaling. May serve to positively link the insulin and IGF-I receptors to an uncharacterized mitogenic signaling pathway. Interacts with the cytoplasmic domain of the autophosphorylated insulin receptor which is then inhibited. The interaction is mediated by the SH2 domain. Also binds activated platelet-derived growth factor receptor and epidermal growth factor receptor., similarity: Belongs to the GRB7/10/14 family., similarity: Contains 1 PH domain., similarity: Contains 1 Ras-associating domain., similarity: Contains 1 SH2 domain., subunit: Interacts with GIGYF1/PERQ1 and GIGYF2/TNRC15., tissue specificity: Highly expressed in skeletal muscle.,

## Research Area

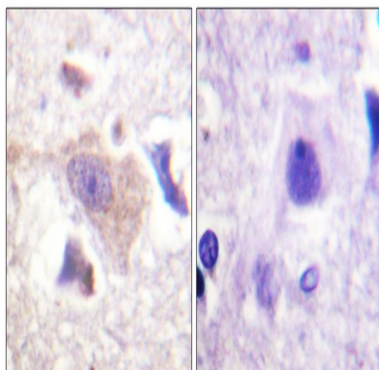
Stem cell pathway; Insulin Receptor

## Image Data

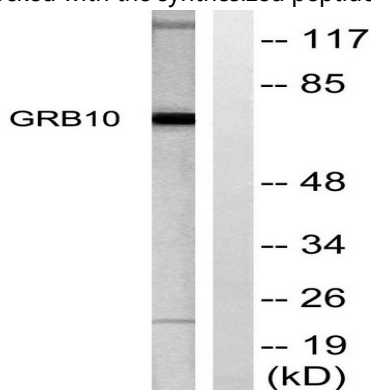


Immunofluorescence analysis of HepG2 cells, using GRB10 Antibody. The picture on the right is blocked with the synthesized peptide.

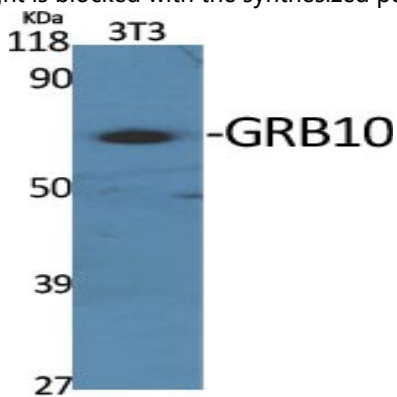
**Product Name: GRB10 Rabbit Polyclonal Antibody**  
**Catalog #: APRab11748**



Immunohistochemistry analysis of paraffin-embedded human brain tissue, using GRB10 Antibody. The picture on the right is blocked with the synthesized peptide.



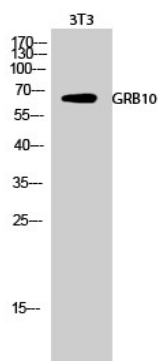
Western blot analysis of lysates from NIH/3T3 cells, treated with Insulin 0.01U/ml 15', using GRB10 Antibody. The lane on the right is blocked with the synthesized peptide.



Western Blot analysis of various cells using GRB10 Polyclonal Antibody diluted at 1: 2000

**Product Name: GRB10 Rabbit Polyclonal Antibody**  
**Catalog #: APRab11748**

---



Western Blot analysis of 3T3 cells using GRB10 Polyclonal Antibody diluted at 1 : 2000

### **Note**

For research use only.