

Product Name: Grap Rabbit Polyclonal Antibody
Catalog #: APRab11745



Summary

Production Name	Grap Rabbit Polyclonal Antibody
Description	Rabbit Polyclonal Antibody
Host	Rabbit
Application	WB,ELISA
Reactivity	Human,Mouse,Rat

Performance

Conjugation	Unconjugated
Modification	Unmodified
Isotype	IgG
Clonality	Polyclonal
Form	Liquid
Storage	Store at 4°C short term. Aliquot and store at -20°C long term. Avoid freeze/thaw cycles.
Buffer	Liquid in PBS containing 50% glycerol, 0.5% BSA and 0.02% New type preservative N.
Purification	Affinity purification

Immunogen

Gene Name	GRAP
Alternative Names	GRAP; GRB2-related adapter protein
Gene ID	10750.0
SwissProt ID	Q13588.The antiserum was produced against synthesized peptide derived from human GRAP. AA range:1-50

Application

Dilution Ratio	WB 1:500 - 1:2000. ELISA: 1:20000
Molecular Weight	28kD

Background

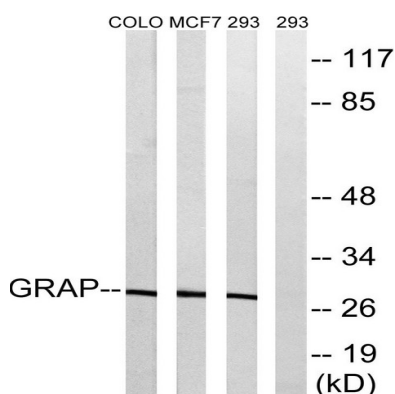
Product Name: Grap Rabbit Polyclonal Antibody
Catalog #: AP Rab11745



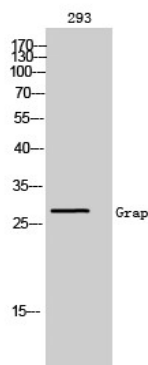
This gene encodes a member of the GRB2/Sem5/Drk family and functions as a cytoplasmic signaling protein which contains an SH2 domain flanked by two SH3 domains. The SH2 domain interacts with ligand-activated receptors for stem cell factor and erythropoietin, and facilitates the formation of a stable complex with the BCR-ABL oncoprotein. This protein also associates with the Ras guanine nucleotide exchange factor SOS1 (son of sevenless homolog 1) through its N-terminal SH3 domain. In general, it couples signals from receptor and cytoplasmic tyrosine kinases to the Ras signaling pathway. [provided by RefSeq, Jul 2012],function:Couples signals from receptor and cytoplasmic tyrosine kinases to the Ras signaling pathway.,similarity:Belongs to the GRB2/sem-5/DRK family.,similarity:Contains 1 SH2 domain.,similarity:Contains 2 SH3 domains.,subunit:Associates through its SH2 domain with ligand-activated receptors for stem cell factor (KIT) and erythropoietin (EPOR). Also forms a stable complex with the Bcr-Abl oncoprotein. GRAP is associated with the Ras guanine nucleotide exchange factor SOS1, primarily through its N-terminal SH3 domain. Interacts with phosphorylated LAT upon TCR activation. Interacts with SHB.,

Research Area

Image Data



Western blot analysis of lysates from 293, MCF-7, COLO cells, using GRAP Antibody. The lane on the right is blocked with the synthesized peptide.



Western Blot analysis of 293 cells using Grap Polyclonal Antibody

Product Name: Grap Rabbit Polyclonal Antibody
Catalog #: APRab11745



Note

For research use only.