

**Product Name: Granzyme B/H Rabbit Polyclonal Antibody**  
**Catalog #: APRab11741**

---

## Summary

<b>Production Name</b>	Granzyme B/H Rabbit Polyclonal Antibody
<b>Description</b>	Rabbit Polyclonal Antibody
<b>Host</b>	Rabbit
<b>Application</b>	IHC, WB, ELISA
<b>Reactivity</b>	Human, Mouse, Rat

## Performance

<b>Conjugation</b>	Unconjugated
<b>Modification</b>	Unmodified
<b>Isotype</b>	IgG
<b>Clonality</b>	Polyclonal
<b>Form</b>	Liquid
<b>Storage</b>	Store at 4°C short term. Aliquot and store at -20°C long term. Avoid freeze/thaw cycles.
<b>Buffer</b>	Liquid in PBS containing 50% glycerol, 0.5% BSA and 0.02% New type preservative N.
<b>Purification</b>	Affinity purification

## Immunogen

<b>Gene Name</b>	GZMB/GZMH GZMB; CGL1; CSPB; CTLA1; GRB; Granzyme B; C11; CTLA-1; Cathepsin G-like 1; CTSG1;
<b>Alternative Names</b>	Cytotoxic T-lymphocyte proteinase 2; Lymphocyte protease; Fragmentin-2; Granzyme-2; Human lymphocyte protein; HLP; SECT; T-cell serine protease 1-3E; GZMH; C
<b>Gene ID</b>	2999.0
<b>SwissProt ID</b>	P10144/P20718. The antiserum was produced against synthesized peptide derived from human Granzyme B. AA range: 10-59

## Application

<b>Dilution Ratio</b>	WB 1:500 - 1:2000. IHC 1:100 - 1:300. ELISA: 1:5000..
<b>Molecular Weight</b>	38kD

---

**Product Name: Granzyme B/H Rabbit Polyclonal Antibody**  
**Catalog #: AP Rab11741**

---



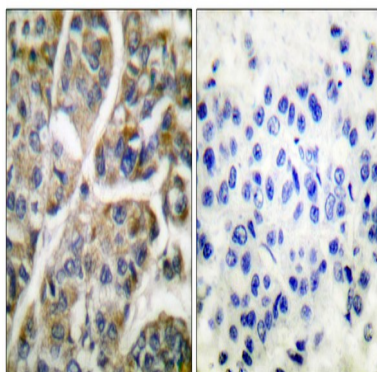
## Background

This gene encodes a member of the granzyme subfamily of proteins, part of the peptidase S1 family of serine proteases. The encoded preproprotein is secreted by natural killer (NK) cells and cytotoxic T lymphocytes (CTLs) and proteolytically processed to generate the active protease, which induces target cell apoptosis. This protein also processes cytokines and degrades extracellular matrix proteins, and these roles are implicated in chronic inflammation and wound healing. Expression of this gene may be elevated in human patients with cardiac fibrosis. [provided by RefSeq, Sep 2016], catalytic activity: Preferential cleavage: -Asp-|-Xaa- >> -Asn-|-Xaa- > -Met-|-Xaa-, -Ser-|-Xaa-, function: This enzyme is necessary for target cell lysis in cell-mediated immune responses. It cleaves after Asp. Seems to be linked to an activation cascade of caspases (aspartate-specific cysteine proteases) responsible for apoptosis execution. Cleaves caspase-3, -7, -9 and 10 to give rise to active enzymes mediating apoptosis, induction: By staphylococcal enterotoxin A (SEA) in peripheral blood leukocytes, similarity: Belongs to the peptidase S1 family, similarity: Belongs to the peptidase S1 family. Granzyme subfamily, similarity: Contains 1 peptidase S1 domain, subcellular location: Cytoplasmic granules of cytolytic T-lymphocytes and natural killer cells,

## Research Area

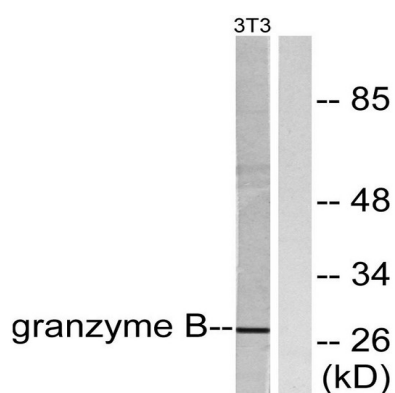
Natural killer cell mediated cytotoxicity; Type I diabetes mellitus; Autoimmune thyroid disease; Allograft rejection; Graft-versus-host disease;

## Image Data

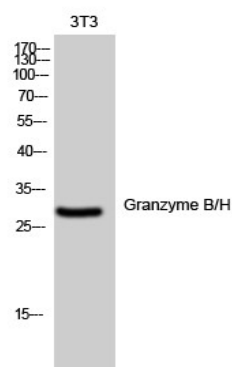


Immunohistochemistry analysis of paraffin-embedded human breast carcinoma tissue, using Granzyme B Antibody. The picture on the right is blocked with the synthesized peptide.

**Product Name: Granzyme B/H Rabbit Polyclonal Antibody**  
**Catalog #: APRab11741**



Western blot analysis of lysates from NIH/3T3 cells, using Granzyme B Antibody. The lane on the right is blocked with the synthesized peptide.



Western Blot analysis of 3T3 cells using Granzyme B/H Polyclonal Antibody diluted at 1: 500

## Note

For research use only.