

Product Name: Granzyme A Rabbit Polyclonal Antibody
Catalog #: APRab11739



Summary

Production Name	Granzyme A Rabbit Polyclonal Antibody
Description	Rabbit Polyclonal Antibody
Host	Rabbit
Application	IHC,ELISA
Reactivity	Human,Rat,Mouse

Performance

Conjugation	Unconjugated
Modification	Unmodified
Isotype	IgG
Clonality	Polyclonal
Form	Liquid
Storage	Store at 4°C short term. Aliquot and store at -20°C long term. Avoid freeze/thaw cycles.
Buffer	Liquid in PBS containing 50% glycerol, 0.5% BSA and 0.02% New type preservative N.
Purification	Affinity purification

Immunogen

Gene Name	GZMA
Alternative Names	GZMA; CTLA3; HFSP; Granzyme A; CTL tryptase; Cytotoxic T-lymphocyte proteinase 1; Fragmentin-1; Granzyme-1; Hanukkah factor; H factor; HF
Gene ID	3001.0
SwissProt ID	P12544.The antiserum was produced against synthesized peptide derived from human GRAA. AA range:61-110

Application

Dilution Ratio	IF 1:200-1:1000. ELISA: 1:5000.
Molecular Weight	

Background

Product Name: Granzyme A Rabbit Polyclonal Antibody
Catalog #: APRab11739

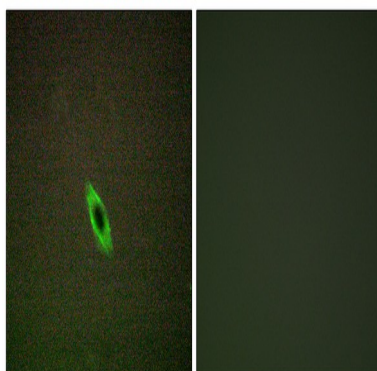


Cytolytic T lymphocytes (CTL) and natural killer (NK) cells share the remarkable ability to recognize, bind, and lyse specific target cells. They are thought to protect their host by lysing cells bearing on their surface 'nonself' antigens, usually peptides or proteins resulting from infection by intracellular pathogens. The protein described here is a T cell- and natural killer cell-specific serine protease that may function as a common component necessary for lysis of target cells by cytotoxic T lymphocytes and natural killer cells. [provided by RefSeq, Jul 2008], catalytic activity: Hydrolysis of proteins, including fibronectin, type IV collagen and nucleolin. Preferential cleavage: -Arg-|-Xaa-, -Lys-|-Xaa- >> -Phe-|-Xaa- in small molecule substrates., function: This enzyme is necessary for target cell lysis in cell-mediated immune responses. It cleaves after Lys or Arg. May be involved in apoptosis., similarity: Belongs to the peptidase S1 family. Granzyme subfamily., similarity: Contains 1 peptidase S1 domain., subunit: Homodimer; disulfide-linked.,

Research Area

Neuroactive ligand-receptor interaction;

Image Data



Immunofluorescence analysis of HepG2 cells, using GRAA Antibody. The picture on the right is blocked with the synthesized peptide.

Note

For research use only.