

Product Name: GPSM3 Rabbit Polyclonal Antibody
Catalog #: APRab11719



Summary

Production Name	GPSM3 Rabbit Polyclonal Antibody
Description	Rabbit Polyclonal Antibody
Host	Rabbit
Application	WB
Reactivity	Human,Mouse,Rat

Performance

Conjugation	Unconjugated
Modification	Unmodified
Isotype	IgG
Clonality	Polyclonal
Form	Liquid
Storage	Store at 4°C short term. Aliquot and store at -20°C long term. Avoid freeze/thaw cycles.
Buffer	Liquid in PBS containing 50% glycerol, and 0.02% New type preservative N.
Purification	Affinity purification

Immunogen

Gene Name	GPSM3 AGS4 C6orf9 G18
Alternative Names	
Gene ID	63940.0
SwissProt ID	Q9Y4H4.Synthesized peptide derived from part region of human protein

Application

Dilution Ratio	WB 1:500-2000 ELISA 1:5000-20000
Molecular Weight	17kD

Background

domain:The GoLoco 1 and/or GoLoco 3 domains exhibit GDI activity towards GDP-bound G(i) alpha protein, but not the GoLoco 2 domain.,function:Interacts with subunit of G(i) alpha proteins and regulates the activation of G(i) alpha

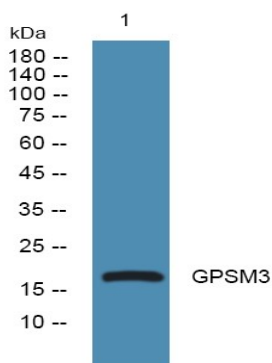
Product Name: GPSM3 Rabbit Polyclonal Antibody
Catalog #: APRab11719



proteins.,similarity:Contains 3 GoLoco domains.,tissue specificity:Expressed in heart, placenta, lung and liver.,domain:The GoLoco 1 and/or GoLoco 3 domains exhibit GDI activity towards GDP-bound G(i) alpha protein, but not the GoLoco 2 domain.,function:Interacts with subunit of G(i) alpha proteins and regulates the activation of G(i) alpha proteins.,similarity:Contains 3 GoLoco domains.,tissue specificity:Expressed in heart, placenta, lung and liver.,

Research Area

Image Data



Western blot analysis of lysates from PC12 cells, primary antibody was diluted at 1:1000, 4°over night

Note

For research use only.